

# ABS & DEPOT

STORAGE SYSTEMS & DEPOT SYSTEMS





## THE WORLD OF EXCELLENCE

### **We realize practical solutions**

For the economical success of a rental operation and the service work shop, a professional planning of the total situation is of great importance. Based on our many years of experience, we can plan the best solution for you.

### **Our service is:**

- › Positioning the storage systems based on the quantities which are requested
- › We do realize individual solutions following your shop concept
- › Producing proposals for the shop design
- › Creating plans (3D and high-quality visualization formats available on request)





SKIDEPOT



# CONTENTS

## STORAGE SYSTEMS

<b>The storage systems</b>	<b>6 – 7</b>
<b>Boot and helmet dryers</b>	<b>8 – 11</b>
Speed Dryer	8
Boot / Helmet Rack Dryer Vario	9
Boot Rack / Helmet Rack	10
Boot Dryer	11
<b>Disinfection equipment</b>	<b>12 – 13</b>
Neutralizer and Neutralizer PRO / Neutralizer ONE	12
AIR CLEAN UVC / Air disinfection against COV-2 VIRUS / Ionization unit	13
<b>Storage of skis and snowboards</b>	<b>14 – 20</b>
Swingcarver	14
Service Rack, Butler and Presentation Rack	15
Universal	16
Universal Wall and Presentation Rack	17
Easy Hang	18 – 19
Snowboard	20
<b>Storage of Ski Poles / Flip Clip / Accessories</b>	<b>21 – 23</b>
Pole Rack	21
Flip Clip	22
Accessories	23
<b>Establishment</b>	<b>24 – 27</b>
Self Terminal	25
Consoles	27
<b>ABS REFERENCES</b>	<b>28 – 31</b>

## DEPOT SYSTEMS

<b>The Depot System</b>	<b>34</b>
<b>Sizes and capacities</b>	<b>35</b>
<b>Models</b>	<b>36 – 37</b>
<b>Custom solutions</b>	<b>40 – 41</b>
<b>Details</b>	<b>43</b>
Locking variants / Interior fittings / Optional features	43
<b>Seating</b>	<b>44 – 45</b>
WOODY / SOLID / ELEGANCE	44
ROUND BENCH / DELUXE	45
<b>Accessories</b>	<b>46 – 47</b>
Presentation Rack / Universal Wall / Universal auf Rollen / Butler	46
Bike rack / Bike hook / Flip Clip	47
<b>Mobile depot systems</b>	<b>50 – 52</b>
Universal Depot	50
Snowboard Depot	51
Boot Rack Air Depot	52
<b>Convincing arguments</b>	<b>54</b>
<b>Hygiene and comfort</b>	<b>55</b>

# STORAGE SYSTEM

## Efficient and innovative

For many years, professionals worldwide have had confidence in abs when the storage of skis and boards is concerned.

## PERFECT PRESENTATION, PERFECT HANDLING

On the storage system, your skis and snowboards will be shown at their best. The handling is constructed according to the latest ergonomic knowledge and allows a quick turn around of your products coming in and going out.

## TOP QUALITY IN EVERY ASPECT

### Made in Switzerland

For abs plus, only high quality materials with the latest technology are used. All racks are made of high quality, «sendzimir» galvanized and coil coated steel sheet. The goal is best stability with minimum weight. On request, the new storage system can be completely mounted in your facility by our technicians.

As always, MONTANA will be of assistance to you even after the purchase. Our complete service organization is available during the season on weekends.

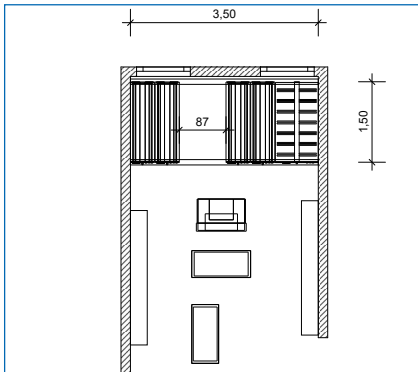
### Light and stable

Thanks to the honeycomb technique, all abs racks have a high stability.





## 2D-PLAN



### Individual planning and design options

MONTANA supports you in all phases of project realization - from planning to implementation.

## 3D-PLAN



The projects are carefully planned for optimal use of space. If desired, 3D-visualizations can also be produced, which facilitate decision making considerably.

## EXECUTION



It goes without saying that we also realise your individual colour and labelling wishes. In this way, the abs can be harmoniously integrated into any existing shop concept.



Powder coated with panel SUPERIOR



Powder coated with panel SMALL



Powder coated without panel

### Individual combinations

Abs racks are available in various lengths:

- › 100 cm
- › 150 cm
- › 200 cm
- › 240 cm
- › 300 cm
- › Special dimension upon request

All racks with the same tracking system can be combined to a total length of 600 cm.

Freestanding racks can be combined in unlimited quantities.



# SPEED DRYER

## FAN-POWERED AUTOMATIC-DRYER FOR SKI, SNOWBOARD AND CROSS-COUNTRY BOOTS

The high air-flow reduces the time of drying to an absolute minimum. The heat and ventilation aggregates are programmable and you can use either the standard warm air or room temperature air. Thanks to the option of having an automatic air stop for each drying position, you can save energy and use the warm air exactly where you need it.



**SPEED DRYER** powder-coated, with tray and screen as SUPERIOR and stainless-steel handrail



**Optional**  
Drip tray for depot area (pluggable)

CAPACITIES SPEED DRYER	
<b>HEIGHT</b>	<b>223 CM</b>
150 cm	40 pairs / 240* pairs
200 cm	60 pairs / 360* pairs
240 cm	70 pairs / 420* pairs
300 cm	80 pairs / 480* pairs

HEIGHT		246 CM	
150 cm	44 pairs / 264* pairs		
200 cm	66 pairs / 396* pairs		
240 cm	77 pairs / 462* pairs		
300 cm	88 pairs / 528* pairs		

\* Performance each day/24 hours. For boots that are wet to a normal degree, where humidity is between 40 and 60%. Duration: 4h/each pairs

POWER CONSUMPTION	BOOT SPEED DRYER	BOOT / HELMET RACK DRYER
Heating	1.500 watt / 4.500 watt	
Ventilation	240 watt	
Ventilation performance	approx. 500 m <sup>3</sup> /h / 630 m <sup>3</sup> /h*	

VOLTAGE	
Europe	1 x 230 V** / 3 x 400 Volt / 50 Hz / 7 A / 16 A
Norway	3 x 230 Volt / 50 Hz / 7 A
USA	1 x 110 V** / 240 Volt / 60 Hz / 19 A
Japan	3 x 200 Volt / 50/60 Hz / 8 A

DIMENSIONS		
Width	60 cm	50 cm
Height	223 cm / 246 cm	

\* with 300 cm minimal heat output  
\*\* minimal heat output



# BOOT / HELMET RACK DRYER VARIO

## BOOT RACK WITH FAN-POWERED DRYER AND HELMET SHELF WITH AIR BLOWER DRYING

This rack combines the advantages of a conventional Boot Rack with the one of the fully automatic dryer. BOOT RACK / DRYER has an efficient, free programmable heating and air ventilation aggregate with a switch function for room ventilation or heating operation (identical with aggregate BOOT DRYER SPEED). The shelves are adjustable in a 5 cm grid.

**BOOT RACK DRYER**  
powder coated with drip tray and SUPERIOR panel and stainless-steel handrail



Bluetooth only possible with OBELISK top3 with EU version

CAPACITIES BOOT RACK / DRYER*	
HEIGHT	223 CM / 9 LEVELS
150 cm	45 pairs
200 cm	58 pairs
240 cm	72 pairs
300 cm	90 pairs

HEIGHT	246 CM / 10 LEVELS
150 cm	50 pairs
200 cm	65 pairs
240 cm	80 pairs
300 cm	100 pairs
* The capacity indication ist based on adult boots in size 27.5	

CAPACITIES HELMET RACK DRYER	
HEIGHT	223 CM / 6 LEVELS
150 cm	72* – 78** pieces
200 cm	96* – 104 ** pieces
240 cm	120* – 130** pieces
300 cm	144* – 169** pieces

HEIGHT	246 CM / 7 LEVELS
150 cm	84* – 90** pieces
200 cm	112* – 120** pieces
240 cm	140* – 150 ** pieces
300 cm	180* – 195** pieces
* men helmets ** women helmets	



**Shelves with drying function**  
Warm air flows from the ventilation ducts to the bottom or top of the shelves.



### Heating and aeration aggregate

- › The heating and aeration aggregate is located on the top
- › Aeration can be changed from air ventilation to room temperature or heating
- › Free programmable
- › With indicator of humidity
- › **4 years guarantee**



### Rack shelves with drying function

Air flows from the ventilation channels on the lower side of the rack shelves.



Digital timer programmable via app (for Android, iOS)

# BOOT RACK / HELMET RACK

## THE VERSATILE BOOT AND HELMET RACK

The Width of the shelves can be adjusted and they can be reversed, so providing the most efficient space for storing ski shoes, cross country ski shoes, snowboarding shoes, helmets, snowboard bindings, and much more.



**MIX RACK (BOOT/HELMET)**  
powder-coated, with tray and screen as SUPERIOR and stainless-steel handrail

DIMENSIONS	
Width	50 cm
Height	223 cm / 246 cm

CAPACITIES	
The capacity indication ist based on adult boots in size 27.5	
Height	223 cm / 10 Levels
150 cm	60 pairs
200 cm	80 pairs
240 cm	100 pairs
300 cm	120 pairs

HEIGHT	246 CM
150 cm	66* – 72** pairs
200 cm	88* – 96** pairs
240 cm	110* – 120** pairs
300 cm	132* – 144** pairs
* with one additional shelf ** with two additional shelves (depending on shoe height)	

CAPACITIES	
Helmet (Size M)	
Height	223 cm / 6 Levels
150 cm	78 pieces
200 cm	104 pieces
240 cm	130 pieces
300 cm	169 pieces

HEIGHT	246 CM*
150 cm	90 pieces
200 cm	120 pieces
240 cm	150 pieces
300 cm	195 pieces
* with one additional shelf	

# SHOE DRYER

## FOR EVEN MORE COMFORT

Winter sports enthusiasts appreciate dry shoes and warm feet. MONTANA offers various drying systems which use warm air or heating rods for various applications.

They dry and warm winter sports shoes of all kinds from the inside in an environmentally friendly and gentle way.

Both versions E and A are available as wall or floor models.



Ease of use



Timer switch

CAPACITY
10 pairs of ski, snowboard or cross-country ski boots



**SHOE DRYER VERSION E**  
with contact heat  
as a wall model

**SHOE DRYER VERSION A**  
with warm air and stand  
base (optional)

**RACK SHELVES WITH DRYING FUNCTION**  
Air flows from the ventilation  
channels on the lower side of  
the rack shelves.

TECHNICAL DATA	VERSION E	VERSION A
<b>POWER USAGE</b>		
When circulating air	-	100 watts
When heating	400 watts	Europe: 1.450 watts USA: 1.100 watts
<b>ELECTRICAL SUPPLY DATA</b>		
Europe	230 V AC / 50 Hz	230 V AC / 50 Hz
USA	115 V AC / 60 Hz	115 V AC / 60 Hz
<b>DIMENSIONS</b>		
Width	64 cm	64 cm
Height	175 cm	195 cm
Depth	48 cm	48 cm



## NEUTRALIZER / NEUTRALIZER PRO

### HYGIENE DEVICE FOR ALL TYPES OF BOOTS AND HELMETS

Disinfection system for all types of boots and helmets. With this easy to use unit you can easily sanitize your rental boots and helmets in an efficient way. Made of stainless steel.

#### Optimal spraying method

An even distribution of the sanitary products within the boots and helmets is guaranteed by 6 nozzles. Optionally you can purchase a table that allows you to work in perfect working height and gives you additional storage space.

#### Neutralizer Pro

The new Neutralizer Pro requires a external air supply. For permanent operation suitable.

#### ELECTRIC INSTALLATIONS

Voltage	100 – 240 V
	4.3 A
	47 – 63 Hz

#### DIMENSIONS

Width	40 cm
Height (without table)	64 cm
Depth	65 cm
Weight	29 kg
Volume capacity	4 l
Spray Time	Infinitely adjustable



## NEUTRALIZER ONE

### ENTRY-LEVEL MODEL

The Neutralizer ONE is the optimal entry-level model for disinfecting boots, helmets and gloves. Like its bigger brother, the Neutralizer One is made of stainless steel to ensure exceptional quality and durability. Its compact design and ease of use makes it particularly suitable for small and/or medium-sized shops & ski rentals.

#### ELECTRICAL SYSTEM

Electrical supply data	100 – 240 V
	1.0 A
	50 – 60 Hz

#### DIMENSIONS

Width	29 cm
Height (excl. table)	61.9 cm
Depth	46.3 cm
Empty weight	15.2 kg
Volume	5 l
Spray time	infinitely variable



## AIR CLEAN UVC / DISINFECTING WITH UVC LIGHT

### FIGHTING CORONA VIRUSES

UVC radiation is a particularly effective method of sterilizing, disinfecting and neutralizing odors. Disinfecting air and surface without any chemicals.

UVC radiation occurs protected, inside the housing. The purified air is then returned to the room - without any chemicals and absolutely ozone-free. There is no danger to the health of humans or animals in the vicinity.

### REDUCES THE SARS-COV-2 VIRUS BY 99%

- Eliminate germs with UVC light
- Powerful 36 W UVC lamp with 254 nm (replacement after 8,000h operation recommended)
- Recommended room size of max. 27 m<sup>2</sup> per air purifier
- Air flow of up to 60 m<sup>3</sup> air per hour
- Low maintenance (no filter) and low operating costs with low energy usage
- Horizontal, vertical or stand-alone setup (base optional)
- Blue LEDs indicate the operating status
- Anodized aluminum housing
- Silent operation at approx. 38 dB
- 230 V connection with plug cable (2 m)
- Remote control and assembly kit included



FIGHTING CORONA VIRUSES

## IONIZATION UNIT

### THE EFFICIENT SOLUTION FOR AIR PURIFICATION AND ODOUR ELIMINATION

#### Air treatment

MONTANA ionization units create a fresh and healthy climate that really motivates people. Concentration and performance levels increase, and fatigue is reduced.

#### Efficiency

A MONTANA ionization unit (Mod. 7-D-1i) purifies a room volume of about 290 m<sup>3</sup>. This corresponds to about 120 m<sup>2</sup> at a room height of 2.40 m. For larger rooms, the use of several units is recommended.

#### Air disinfection

The MONTANA ionization unit destroys up to 90% of all airborne germs, fungal spores and bacteria in an environmentally friendly manner.

#### Odor neutralization

Efficient ionization neutralizes unpleasant odors through effective micro-oxidation.



IONIZATION UNIT  
also available with  
wall mount on request

#### ELECTRICAL SYSTEM

Electrical supply data 230 Volt / 50 Hz

Power 35 Watt / 290 m<sup>3</sup> / h

#### DIMENSIONS

Width 60 cm

Height 24 cm

Depth 14 cm

Empty weight 28 kg

# SWINGCARVER

## STORAGE AND PRESENTATION

The Swingcarver is the best way of storage for carving, fat and cross country skis. In an angle of 40° the skis will be perfectly presented.

### Options with additional equipment

- › Rack bottoms
- › Easy Hang
- › Flip Clip



**SWINGCARVER** powder coated with drip tray and SUPERIOR panel and stainless-steel handrail

**SWINGCARVER** with carriage on wheels



### Swingcarver holding system

The bows hold the skis safe and with care. The easy to use mechanism saves time when skis come in and go out.



**Cross bar with pole holders**  
To be used with high columns.



**Shelves**  
In conjunction with high columns.

DIMENSIONS	
Width	50 cm
Height	146 cm / 223 cm / 246 cm

CAPACITIES	STANDARD Receptacle width: 10,5 cm	WIDE BODY SKI Receptacle width: 15 cm <sup>1</sup>
100 cm*	12 pairs ski	10 pairs ski
150 cm	20 pairs ski	16 pairs ski
200 cm	28 pairs ski	22 pairs ski
240 cm	34 pairs ski	28 pairs ski
300 cm	40 pairs ski	32 pairs ski

\* Rack only with under carriage on wheels  
<sup>1</sup> Additional dimensions available on request



## SERVICE RACK

### Workshop trolley

For approx. 30 pairs of skis. Drip tray with drain hose. Including rubber mat. Undercarriage with 4 casters, 2 with brakes.

DIMENSIONS	
Width	120 cm
Height	147 cm
Depth	80 cm

CAPACITIES	
approx. 30 pairs ski	



## BUTLER

### Butler Transport rack with additional helmet rack

Spacey rack for 6 ski equipments. Including basket for small items.

DIMENSIONS	
Width	50 cm
Length	100 cm
Height	155 cm

CAPACITIES	
6 pairs of ski (or 4 Snowboards) and 6 pairs of shoes	
Optional	6 helmets, 6 pairs of gloves and 6 glasses



## TRANSPORT RACK

### Transport trolley

Offers space for a wide range of sports equipment. Tub with drain incl. rubber mat. Chassis with 4 swivel castors, 2 of them with brake.

DIMENSIONS	
Width	77cm / 117 cm
Length	142 cm
Height	193 cm

CAPACITIES	
at least 36 pairs of skis or 24 snowboards	



# UNIVERSAL

## THE UNIVERSAL STORAGE SYSTEM

In this system, a great number of variable ski types and boards can be stored in a minimum space.

UNIVERSAL can be used for alpine, carving, cross country skis and snowboards. This storage system is easy to handle and enables a fast and easy loading and unloading.

The ideal solution for ski back passes in rental operation and in service workshops.

The inclined lower metal shelf and the upper bars can easily be height adjusted. That means that shorter sport gear such as children skis can also be stored.

### Option

- › Boot shelf
- › Easy Hang
- › Flip Clip
- › Undercarriage with swivelling wheels



**UNIVERSAL** powder coated with panel SUPERIOR and stainless-steel handrail

**UNIVERSAL** 2 levels, powder coated with panel SUPERIOR

DIMENSIONS	
Width	45 cm
Height	146 cm / 223 / 246 cm

CAPACITIES*	
100 cm**	approx. 16 Pairs Ski
150 cm	approx. 24 Pairs Ski
200 cm***	approx. 34 Pairs Ski
240 cm	approx. 42 Pairs Ski
300 cm	approx. 50 Pairs Ski

\* At an average ski width of 115 mm  
 \*\* Rack only with under carriage on wheels  
 \*\*\* Capacity cross-country skis approx. 78 pairs



**UNIVERSAL** is adjustable in width and height



**UNIVERSAL WS** 100 cm / 150 cm

## UNIVERSAL WALL

### THE SPACE SAVING WALL RACK

UNIVERSAL WALL is made of powder coated steel sheet. It is bolted to the wall and has room for all kind of skis or boards.

UNIVERSAL WALL is perfect for outdoor and indoor use.



DIMENSIONS	
Width	25 cm
Height	143 cm

CAPACITIES*	
100 cm	approx. 8 Pairs Ski
150 cm	approx. 12 Pairs Ski
*) at an average ski width of 115 mm	

UNIVERSAL WALL can be extended with extension elements

## PRESENTATION RACK

### FOR THE IDEAL APPEARANCE OF SKI AND SNOWBOARD

This representative rack is suitable for use in sales, rentals, and as a depot.

The versatile arrangement options also make the PRESENTATION RACK excellent as a guidance system.

The Presentation Rack comes in Inox as a standard option.

DIMENSIONS	
Width	30 cm / 80 cm
Height	120 cm
Depth	50 cm





## EASY HANG

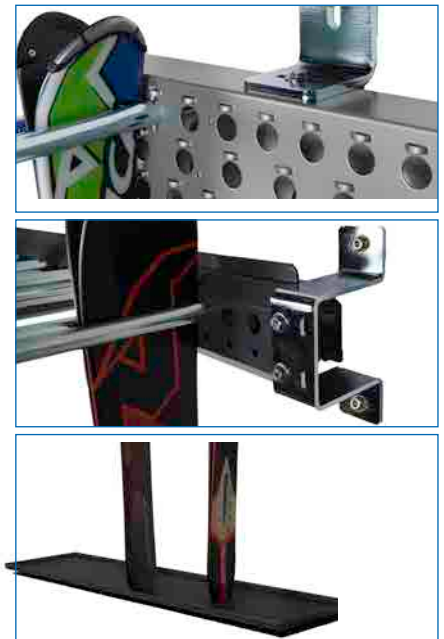
### THE VERSATILE HANGING SYSTEM FOR ALL SKI TYPES

The module system gives the possibility to store any kind of skis and snowboards on minimum space. Thanks to the individually adjustable supports, also children skis, snowblades and fun boards can be stored clearly arranged in a space saving way.

**EASY HANG** powder coated with drip tray, panel SUPERIOR and stainless-steel handrail. Equipped with 1 Vario cross bar.



Also available for wall mounting:



#### Versions with 2 levels

DIMENSIONS	
Width	80 cm
Height	223 cm (246 cm)

CAPACITIES*	adults**	children***
150 cm	36 - 54 pairs ski	104 - 144 pairs ski
200 cm	48 - 72 pairs ski	144 - 192 pairs ski
240 cm	60 - 84 pairs ski	176 - 224 pairs ski
300 cm	72 - 108 pairs ski	224 - 288 pairs ski

Capacities depending on arrangement

#### Versions with 3 - 4 levels

DIMENSIONS	
Width	80 cm
Height	246 cm (to 300 cm)

Important: The supports must be raised on these versions

CAPACITIES*	adults**	children***
150 cm	36 - 72 pairs ski	96 - 192 pairs ski
200 cm	54 - 108 pairs ski	132 - 264 pairs ski
240 cm	63 - 126 pairs ski	156 - 312 pairs ski
300 cm	78 - 156 pairs ski	192 - 384 pairs ski

#### Versions wall mounting

DIMENSIONS	
1 - row	
5 - row (4-pole)	

CAPACITIES*	adults**	children***
100 cm	12 pairs ski	16 pairs ski
150 cm	18 pairs ski	24 pairs ski
100 cm	min. 12 pairs ski	16 pairs ski
150 cm	min. 18 pairs ski	24 pairs ski

\* Stepped hanging with additional equipment and height 240 cm

\*\* 3 pairs of ski per position

\*\*\* 4 pairs of ski per position

## VARIABLE WAY OF HANGING

### 4-point hanging system on 2 bars

For a most efficient use of the capacities for skis and snowboards.



### 4-point hanging system on 2 bars

Individually adjustable in height.



### Suspension for snow shoes



### Drip trays wit rubber mat

Made of sendzimir galvanized, powder coated steel to hold the mealted water. are part of the delivery.



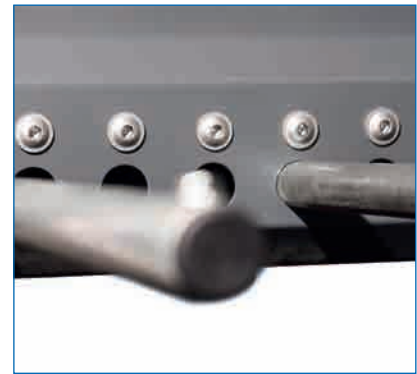
### Suspension with split pin

Fast and easy adjusting of the suspensions without tools.



### suspention screwed

Individual adjusting of the suspension.



### 6-row bar with suspension

Storage for all actual ski models (incl. skis with special top constructions) thanks to the perforated hole system is possible.



### 6-row bar with suspension

Optimized hole arrangement for a full capacity. and skis with special surfaces.



# SNOWBOARD

## THE VARIABLE SNOWBOARD RACK

SNOWBOARD powder coated with basket for bindings and additional shelves

**Stoppers**  
Easy to use stoppers keep the snowboards safely in position.



**SNOWBOARD RACK** powder coated on the adjustable holders, snowboards with and without mounted bindings can be stored. Panel SUPERIOR and stainless-steel handrail

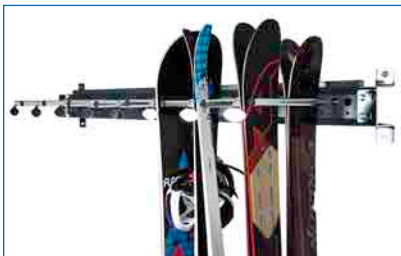
**SNOWBOARD MIX RACK** powder coated with two cross bars, shelves, drip tray and panel SUPERIOR and stainless-steel handrail

DIMENSIONS	
Width	70 cm
Height	223 cm / 246 cm

CAPACITIES	WITH (SOFT-) BINDINGS*	WITHOUT BINDINGS**
150 cm	16 – 20 snowboards	68 snowboards
200 cm	22 – 28 snowboards	90 snowboards
240 cm	28 – 34 snowboards	106 snowboards
300 cm	32 – 40 snowboards	136 snowboards

\* standard assembly  
\*\* with additional brackets

Also available for wall mounting:



CAPACITIES WALL MOUNTING	WITH (SOFT-) BINDINGS*	WITHOUT BINDINGS**
100 cm	5 snowboards	22 snowboards
150 cm	8 snowboards	34 snowboards

\* standard assembly  
\*\* with additional brackets



# POLE RACK

## THE FLEXIBLE STORAGE OF SKI AND CROSS COUNTRY POLES

These pole racks with height adjustable holders can be used to store short sport units e.g. children skis, snow blades or fun carver.

DIMENSIONS POLE RACK	
Width	80 cm
Height	223 cm / 246 cm

DIMENSIONS POLE RACK WALL	
Width	80 cm
Height	240 cm



**POLE RACK** powder coated with drip tray and panel SUPERIOR and stainless-steel handrail. Equipped with 1 serial standard cross bar and 1 optional Vario cross bar

**POLE RACK WALL** powder coated, height 240 cm. Equipped with 1 standard and 1 Vario cross bar.

CAPACITIES	POLE RACK (divider ~ 60 mm) 1 Level	POLE RACK (divider ~ 60 mm) 2 Levels	POLE RACK WALL
100 cm	–	–	240 pairs
150 cm	180 pairs	360 pairs	360 pairs
200 cm	240 pairs	480 pairs	–
240 cm	288 pairs	576 pairs	–
300 cm	360 pairs	720 pairs	–

Also available for wall mounting:

CAPACITIES WALL MOUNTING	
100 cm	120 pairs
150 cm	180 pairs





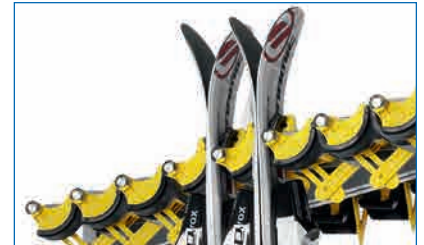
# FLIP CLIP CROSS BARS

## THE GREAT STORAGE SYSTEM

In FLIP CLIP you can store basically any winter sport gear. It is presented in an angle of 40°. The items are held secure and are easy and fast to use.

FLIP CLIP cross bars can be added to any abs rack.

CAPACITIES	
per cross bars	
150 cm	22 pairs
200 cm	30 pairs
240 cm	36 pairs
300 cm	44 pairs



**FLIP CLIP** cross bars combined with **UNIVERSAL**, height 246 cm.

FLIP CLIP cross bars can be added to any abs rack.

FC - Universal rack with cover Superior and stainless-steel handrail.

## FLIP CLIP WALL MOUNTING SYSTEM

FLIP CLIP elements are available in straight or with 40° version and are available as follows:

- › Single elements (quantity to be selected)
- › 3 units (Trio) incl. 50cm of mounting rail
- › 5 units (Quintett) incl. 95cm of mounting rail
- › Mounting rails in the length of 100 and 200 cm

**For an easy storage of ski and snowboards**



FLIP CLIP Trio straight version with rail, wall mounted



FLIP CLIP 40° on rail max. 7 piece per meter



Click rail



FLIP CLIP straight on rail max. 5 piece per meter

# ACCESSORIES

EQUIPMENT OPTIONS AND ACCESSORIES INCREASE THE USE OF YOUR RACK.



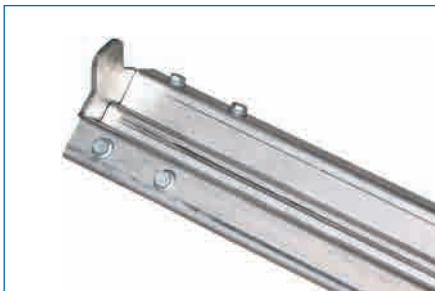
**Roller chassis**



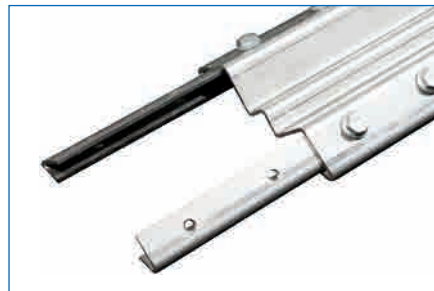
**Runner rail**  
made of chrome steel



**Rail mechanism**  
diameter of rollers 60 cm



**End stops made of stainless steel**  
for rails



**Rail connectors made of stainless steel**  
for rails



**Rack stop**  
trolley stops for rails that are screwed into position



**Traverses**  
sendzimir-galvanized and powder-coated



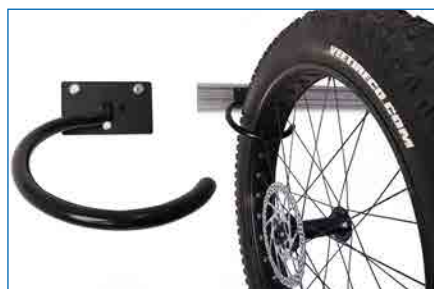
**Traverse with clothes rail**  
EASY HANG can be readily equipped with accessories such as this traverse with a clothes rail



**Traverse with eyebolts**  
for securing the ski with a cable lock



**Rubber coating**  
for the upper holding rods on the UNIVERSAL help prevent items loaded on it from slipping



**Bike hook with rim guard for Fat Bike**  
for abs traverse



**MONTANA abs – bicycle parker**  
minimum order quantity of 3

# INSTALLATIONS

As a specialist partner of rental outlets, depots and shops, we offer a wide range of fittings.

As you would expect, all furniture is available in custom colors and comes with integrated cable channels.



Individually designable possibilities of the covers.

Of course, all our furniture is available in individual colors and all have integrated cable channels.

# SELF TERMINAL



Desks with individual design options

## ELEGANT AND SOLID DESK FOR THE SELF SERVICE CHECK-IN

High desk with touch screen monitor and web cam. Lockable PC and printer case.

### Option

- › Terminal with touch screen, built in PC and webcam

### Desk

DIMENSIONS	
Width	40,5 cm
Height	102,5 cm
Depth	46,0 cm
Weight	approx. 25 kg





VERLEIH



# CONSOLES



### DUAL console

The console, which can be operated from both sides, enables two people to work efficiently in a very confined space.

DIMENSIONS	
Width	171 cm / 192 cm
Height	91 cm
Depth	90 cm

DUAL console

Individual construction possibilities

### Consoles by MONTANA

Practical furniture in solid construction and modern design. Thanks to height adjustable support and the adjustment positions for left and right handed people, efficient work is possible at these tables. On request the tables are available with adjustable height and turntable holders for the PC terminals.



UNIVERSAL console

### UNIVERSAL console

DIMENSIONS	
Width	150 cm
Height	99 cm
Depth	73 cm

### COMPACT console

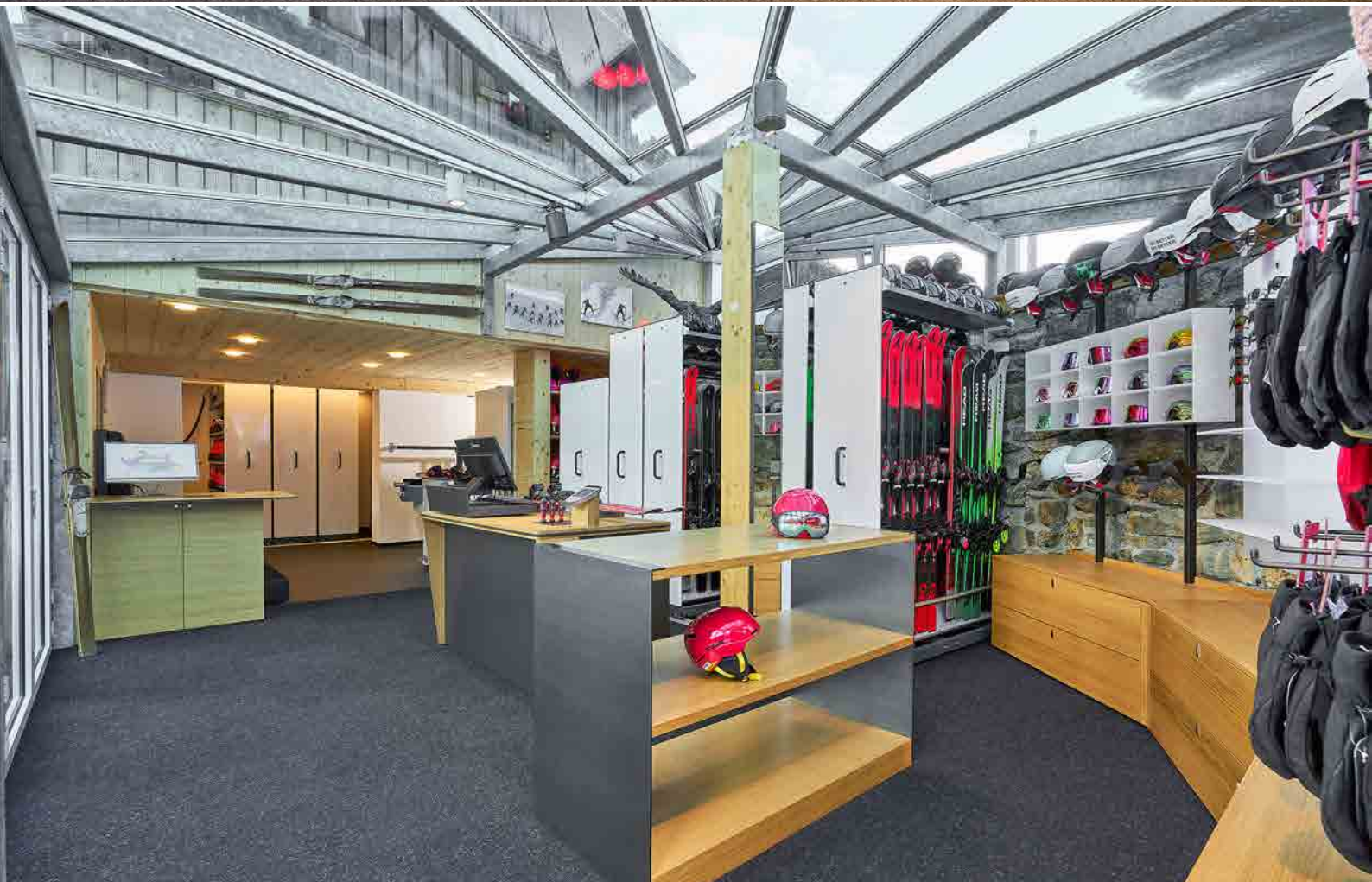
DIMENSIONS	
Width	75 cm
Height	90 cm / 115 cm
Depth	60 cm

### SEATING

› S. 44 - 45

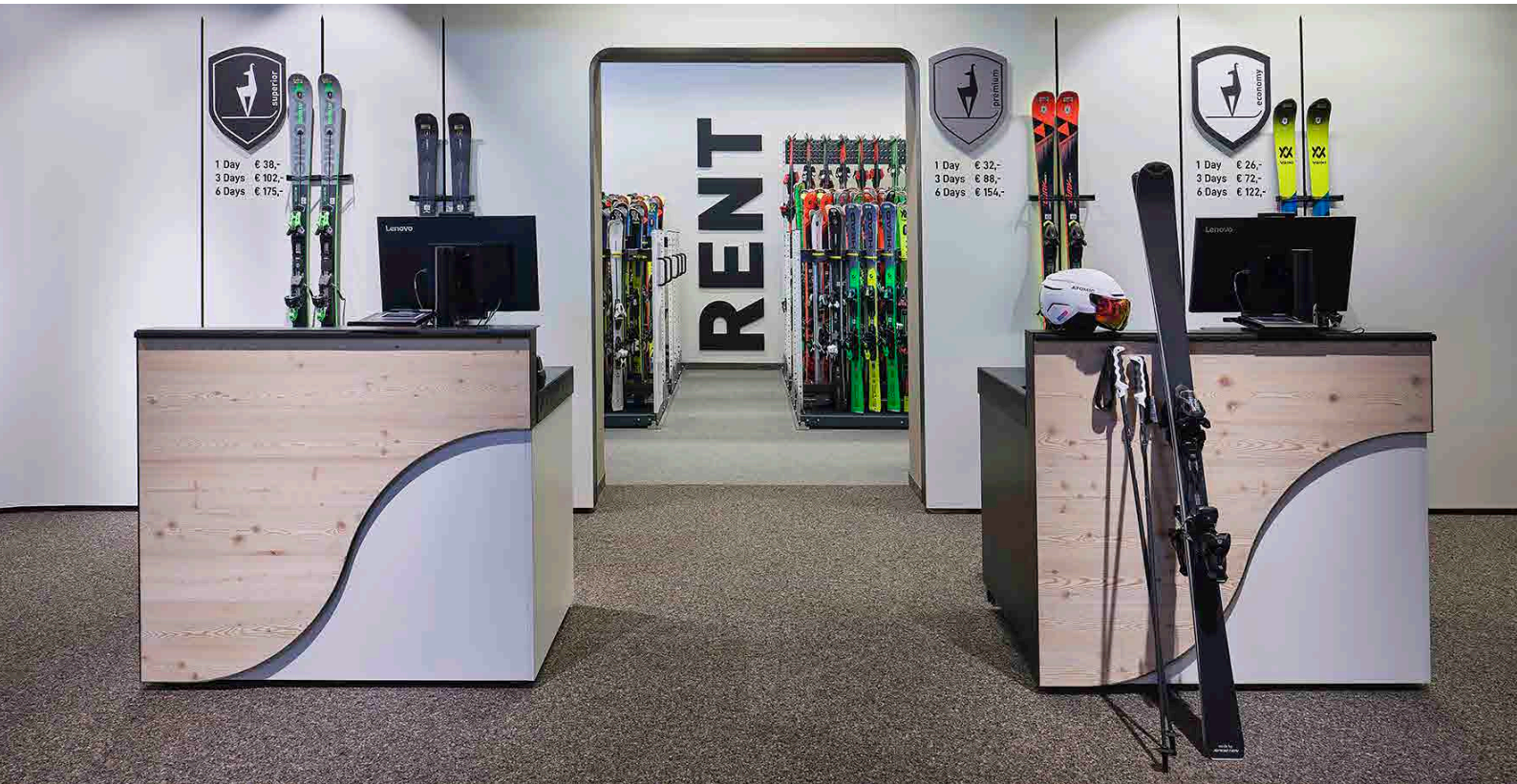




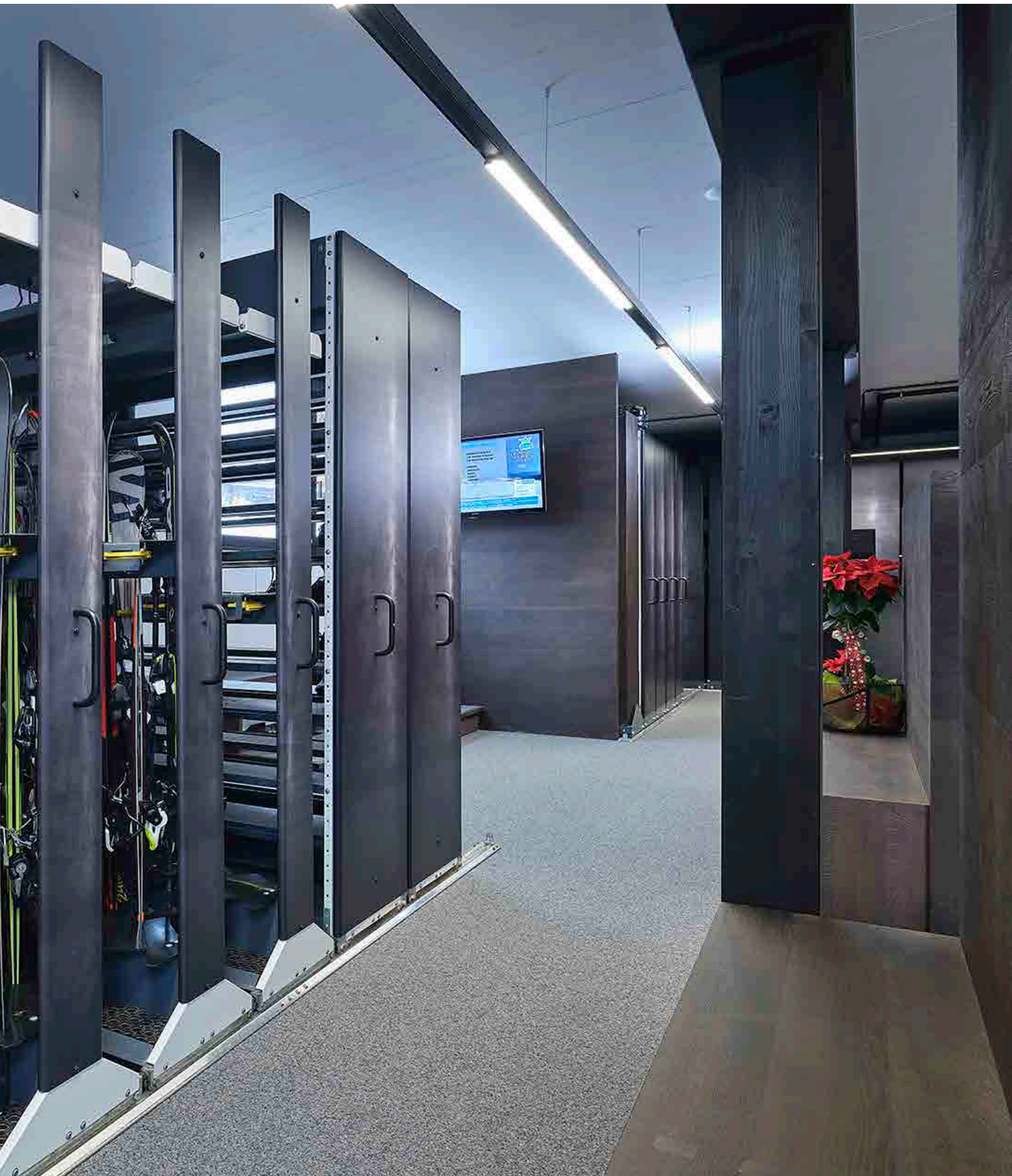




# REFERENCES ABS

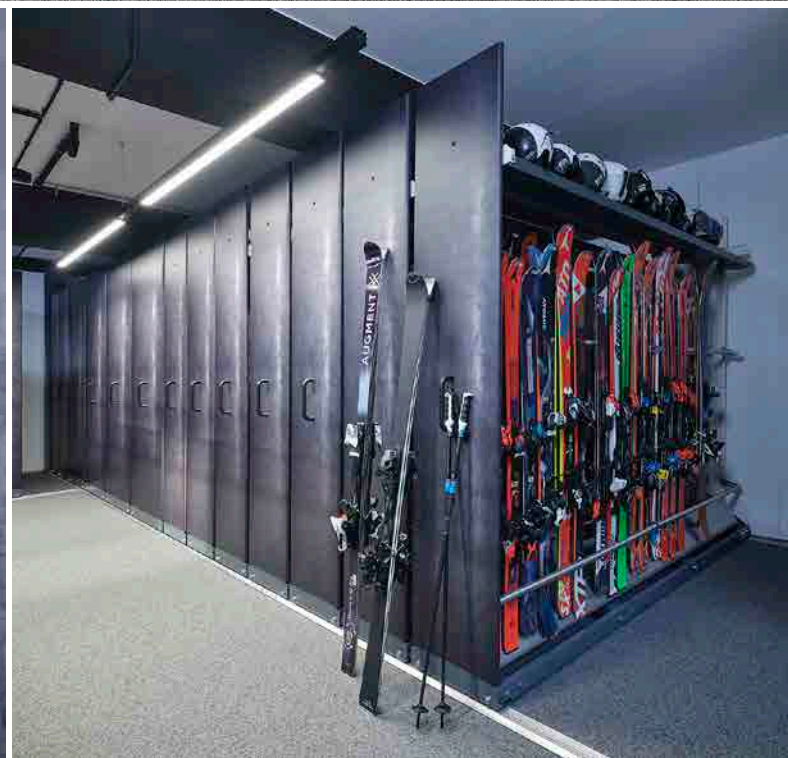
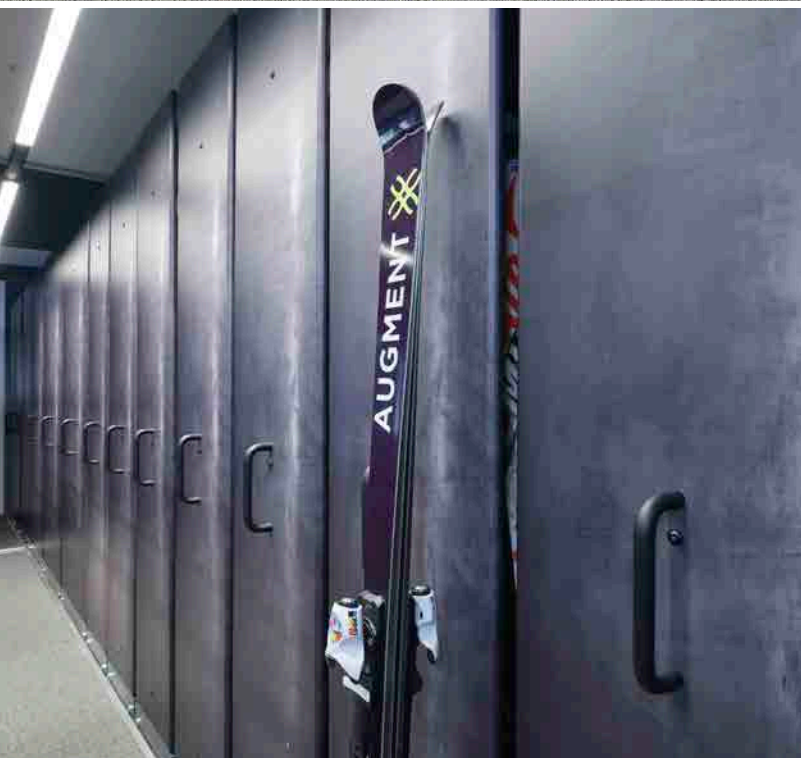
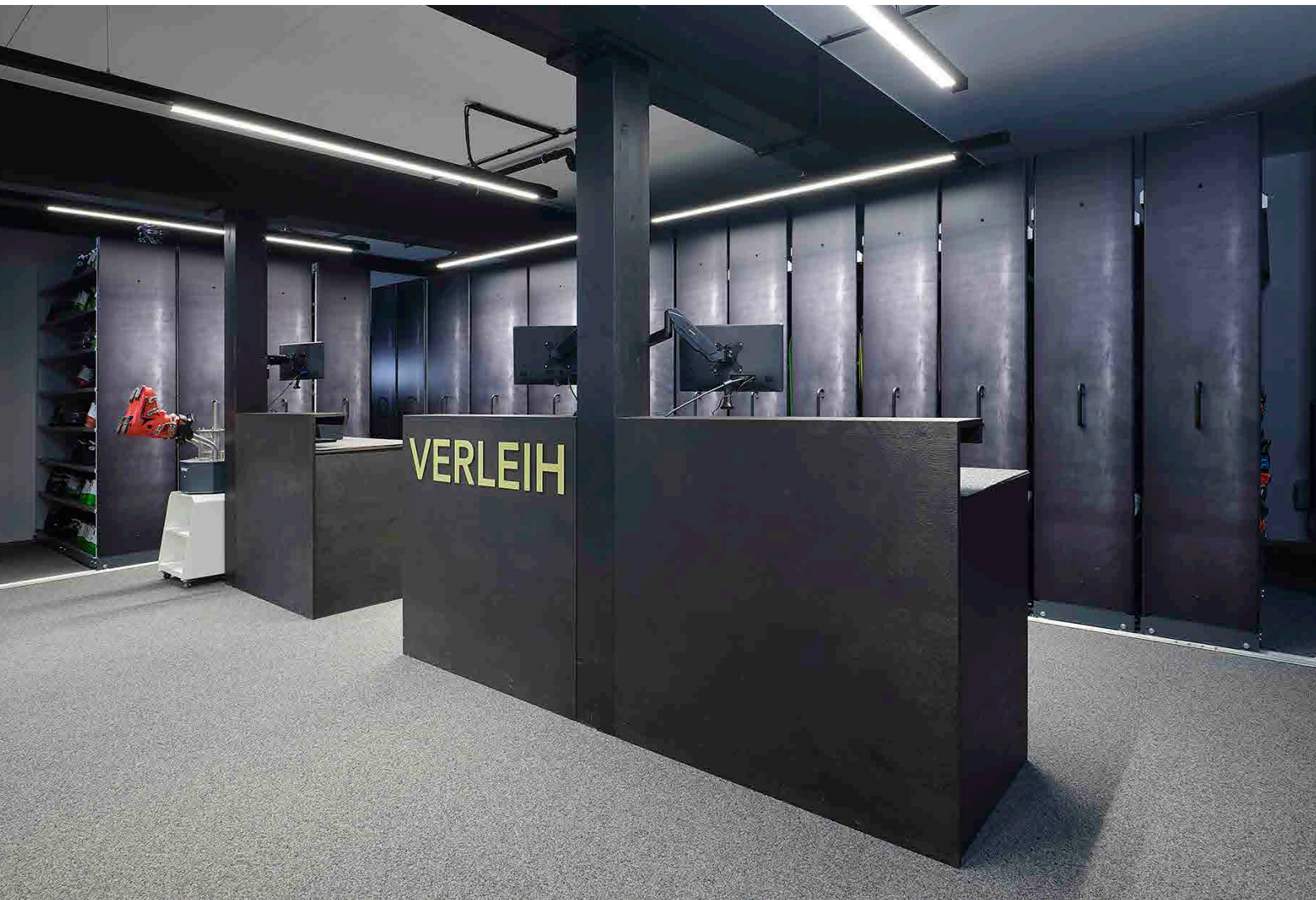








# ABS REFERENZEN









# DEPOT

DEPOT SYSTEMS



# DEPOT SYSTEM

The DEPOT SYSTEMS ensure comfortable storage and dry ski equipment in the ski depots of rental stations, mountain railways, private homes and hotels.

## CUSTOM SOLUTIONS

Be inspired by the unique and diverse material combinations as well as custom design options. With the depot systems, your ski depot turns into a true eye-catcher providing your customers with a guaranteed sense of comfort and well-being.

Whether you require a simple combination lock or a fully networked lock system: the locking variants of the depot systems are versatile and tailored to your specific needs. In addition, you can optionally add custom logos or emblems to the outside of the depot lockers.

MONTANA offers a wide range of accessories and extras for even more comfort at the ski depot.

## COMFORT AND CLEANLINESS

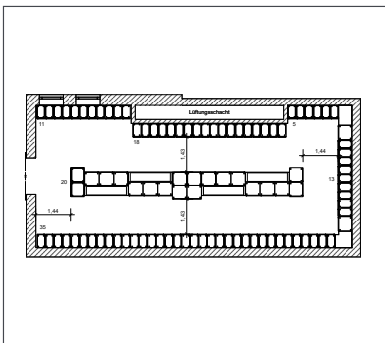
The convenient and hygienic storage of winter sports equipment is key for any ski depot. Depot lockers feature an ingenious design for removing water and moisture to ensure the locker or room climate is always optimal.

## FULL SUPPORT

From planning to the first day of the coming season. MONTANA supports you during all stages of project implementation and offers continued support following installation to ensure the depot system can be put into service without a problem.

## GOOD PLANNING IS HALF THE BATTLE

Projects are carefully planned to make optimal use of the available space. On request we will prepare 3D images to make decisions related to the layout and design a lot easier.



2D plans



3D plans and high-quality visualizations



Implementation

## SIZES AND CAPACITIES



Dimensions / Technical Data	
Width	Varies by design
Height	215 cm with enclosed base 220 cm with support
Depth	56 cm
Power	45 watt / 90 watt

Capacities	30 cm	35 cm	45 cm	60 cm	65 cm	70 cm
Pairs of skis / snowboards	2	2	3	4 / 5	4 / 5	4 / 5
Pairs of ski poles	2	2	3	4 / 5	4 / 5	4 / 5
Shoes	2	2	3	4 / 5	4 / 5	4 / 5
Helmets	0	2	3	4 / 0	4 / 0	4 / 0
Gloves (optional)	0	2	3	4 / 0	4 / 0	4 / 0

Additional dimensions and layouts available on request

## MODELS

### DEPOT LOCKERS FOR THE ENTIRE SKI EQUIPMENT



Ski locker type 30 cm  
for 2 sets of ski gear



Ski locker type 35 cm  
for 2 sets of ski gear

Ski locker type 35 cm 2+1  
for ski gear of  
2 adults and 1 child



Ski locker type 45 cm  
for 3 sets of ski gear



Ski locker type 60 cm  
for 4-5 sets of ski gear



Ski locker type 65 cm  
for 4-5 sets of ski gear



Ski locker type 70 cm  
for 5 sets of ski gear

### DEPOT LOCKERS FOR HELMETS AND GLOVES



Ski locker type 40 cm (4x1)  
for 1 pair of ski boots and  
1 ski helmet



Ski locker type 40 cm (2x2)  
for 2 pairs of ski boots and  
2 ski helmets

# MODELS

CHOOSE YOUR PERSONALISED WARDROBE FITTINGS









# CUSTOM SOLUTIONS

Custom sizes, materials and designs available, depending on your requirements:



**BODY:** SHEET STEEL

**DOOR:** SHEET STEEL

DOUBLE WALLED WITH HONEYCOMB CONSTRUCTION

On request



## PROPERTIES

- ✓ Galvanized and powder-coated metal lockers
- ✓ Steel thickness: 1.0 - 1.5 mm
- ✓ Available in various RAL colours

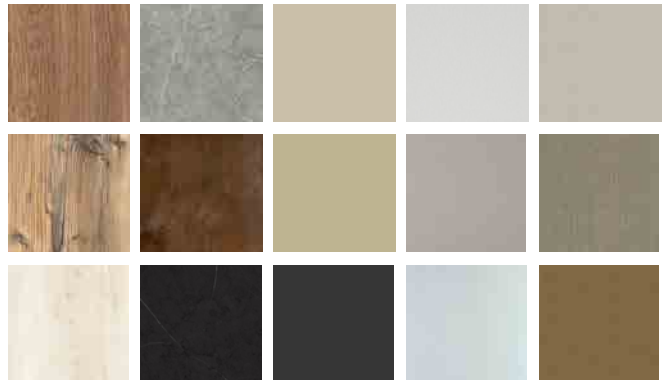
Included in the price

			
RAL 3000 Feuerrot	RAL 3020 Verkehrsrot	RAL 5010 Enzianblau	RAL 7016 Anthrazitgrau
			
RAL 3035 Lichtgrau	RAL 9001 Cremeweiss	RAL 9002 Grauweiss	RAL 9005 Tiefschwarz
			
RAL 9010 Reinweiss	RAL 9016 Verkehrsweiss	RAL 7011 Eisengrau	RAL 7016 Anthrazitgrau





**BODY:** SHEET STEEL  
**DOOR:** HPL



### PROPERTIES

---

- ✓ Metal lockers combined with HPL solid core panel
  - ✓ HPL 13 mm
  - ✓ Available in various colours and designs
- 



**BODY:** SHEET STEEL  
**DOOR:** GLASS



### PROPERTIES

---

- ✓ Safety glass 10 mm
  - ✓ Smooth, clear, ornamented, coloured
  - ✓ Motifs (embedded or stoved)
-







## DETAILS

### LOCKING VARIANTS



Online locked style, glass door



Online cabinet lock with 2 USB ports and LED lighting



Cylinder lock available on request



Digilock

### INTERIOR FITTINGS



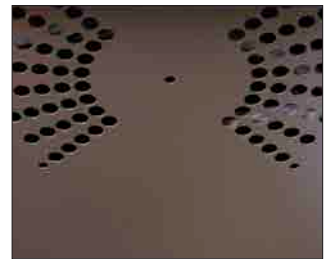
Shoe dryer with optional glove dryer



Perforated bottom



Removable, water-permeable floor mat



Vents in the ceiling for ideal locker climate

### OPTIONAL FEATURES



Design on HPL or glass door available



Emblem with custom logo



Accessory net and coat hook



LED lighting



Base or support frame



Slanted top



Mirror on side or interior wall



Fitted with a mirror wall



## SEATING

The various seating options offer optimal and compact installation in any depot. The SOLID and WOODY benches offer an impressive variability and are extremely robust. On the other hand, the ELEGANCE bench offers a simple, yet timeless design.

MONTANA has years of experience, allowing us to offer custom furnishing options that are tailored exactly to the desired functionality and preferred look of your depot.



The WOODY bench features a simple and robust construction.

### WOODY

The WOODY features a simple design. The wood adds character to the depot. The bench width is variable to allow using it from one side or both sides.

Models / Dimensions	
Length	110 cm / 150 cm / 200 cm
Width	30 / 50 cm
Height	44 cm



The SOLID bench features a robust construction and a timeless design.

### SOLID

The SOLID bench features an impressive tough construction and a timeless design. The 45 cm deep bench further has enough room to be used from both sides. The colour of the faux leather can be selected to match your interior.

Models / Dimensions	
Length	110 cm / 150 cm / 200 cm
Width	45 cm / 60 cm
Height	44 cm



The ELEGANCE bench features a simple design and boasts a variety of uses.

### ELEGANCE

The ELEGANCE bench features an impressive simple design and a variety of uses. The bench is also deep enough to be used from both sides. The colour of the faux leather can be selected to match your interior.

Models / Dimensions	
Length	110 cm / 150 cm / 200 cm
Width	45 cm
Height	44 cm

Other dimensions available on request



Round bench with two-piece construction

## ROUND BENCH

Elegant round bench in a two-piece construction. Attractive seating for a special visual highlight.

MODELS / DIMENSIONS	
Diameter	149 cm
Hight	45 cm



incl. platform and 2 drawers,  
available in any dimensions and material

## DELUXE

All sides of the platform are clad in black steel. Solid, finger jointed drawers are worked into the platform. The seat and backrest feature high-quality padding covered with leather.

MODELS / DIMENSIONS	
Length	449 cm
Depth	110 cm
Hight	138 cm

## ACCESSORIES

MONTANA offers accessories as the perfect add-on to offer winter sportsmen and sportswomen maximum comfort. The PRESENTATION RACK or UNIVERSAL WALL storage systems are the ideal solution to temporarily store winter sports gear. With the UNIVERSAL ON WHEELS or the BUTLER 2, objects can easily be transported from one place to the other.



### PRESENTATION RACK

To briefly hold skis and snowboards. The versatile arrangement options also make the PRESENTATION RACK excellent as a guidance system.

Models / Dimensions	
Width	120 cm / 30 cm
Depth	80 cm
Height	50 cm



### UNIVERSAL WALL

UNIVERSAL WALL is excellent for indoor and outdoor use. The shelving anchors to the wall and offers room for different skis and snowboards at least 100 cm long.

Models / Dimensions	
Width	100 cm / 150 cm
Height	143 cm
Depth	25 cm



### UNIVERSAL ON WHEELS

Use the MONTANA UNIVERSAL ON WHEELS to store a large number of different skis and snowboards in a small space whilst remaining mobile.

Models / Dimensions	
Width	100 cm / 150 cm
Depth	45 cm
Height	146 cm



### BUTLER

The transport and collection cart with wheels offers room for the entire ski gear of up to 6 persons. Optionally available with helmet storage and shelves for goggles and gloves.

Models / Dimensions	
Width	50 cm
Depth	100 cm
Height	155 cm

Optional: 6 helmets, 6 pairs of gloves and goggles





## BIKE RACK

The MONTANA bike rack takes up little space, creates order and offers safe storage for your bikes. The system is self-supporting and expandable. Even kids' bikes are easy to store.



## BIKE HOOK

Bike hook with rim guard for Fat Bike. MONTANA optionally offers the bike hook with FLIP CLIP mounting rail. This allows you to combine it with the FLIP CLIP system for skis and snowboards.



## FLIP CLIP

Ski and snowboard wall storage made easy. The FLIP CLIP elements are available in straight and 40° designs.









# UNIVERSAL DEPOT

The UNIVERSAL DEPOT holds different types of skis plus poles. The easy to handle, adjustable height storage system is easier to use. The top lengthwise shelving can be equipped with lock system.

Each shelving unit is customised and available as a floor unit or including a rail mechanism.



UNIVERSAL DEPOT  
powder-coated with  
SUPERIOR trim

Dimensions	
Length	150 cm - 300 cm
Width	70 cm
Height	141 cm

Capacities	
Variable, depending on length	



Practical pole holder



Secure lock



Digital lock system

# SNOWBOARD DEPOT

SNOWBOARD DEPOT is the solution for storing snowboards.

The SNOWBOARD DEPOT holds various snowboard types. The easy to handle, adjustable height storage system is easier to use. The top lengthwise shelving can be equipped with lock system.

Each shelving unit is customised and available as a floor unit or including a rail mechanism.



Available with any lock system



SNOWBOARD DEPOT  
powder-coated with  
SUPERIOR trim

Dimensions	
Length	150 cm - 300 cm
Width	70 cm
Height	141 cm

Capacities	
Variable, depending on length	

# BOOT RACK AIR DEPOT

## Depot locker with built-in dryer for ski and snowboard boots

This depot system can be customised to the space and size requirements of the customer. Each shelving unit is customised and available as a floor unit or including a rail mechanism.

Each compartment has an aluminium roll-up door and can be equipped with a key lock system. The BOOT RACK AIR DEPOT features a powerful, programmable heating and ventilation unit with toggle function for room air or heat (identical to SPEED DRYER).



**BOOT RACK AIR DEPOT**  
sendzimir galvanised with  
SUPERIOR trim

### TECHNICAL DATA

POWER USAGE	
on recirculation	240 Watt
on heat	4,500 Watt

ELECTRICAL SUPPLY DATA	
Europe	3 x 400 Volt / 50 Hz / 7 A
Norway	3 x 230 Volt / 50 Hz / 7 A
USA	240 Volt / 60 Hz / 19 A
Japan	3 x 200 Volt / 50 Hz / 8 A

### Dimensions

Length	150 cm - 300 cm
Width	80 cm
Height	223 cm





209

208

207

206

205

204

203

202



# CONVINCING ARGUMENTS

## ACCESSORIES AND EXTRAS

- ✓ Lock systems and manufacturers of choice
- ✓ Electrical heating – environmentally friendly – energy-efficient – gentle on materials
- ✓ Optionally available with air drying
- ✓ Sturdy surfaces
- ✓ Connection cover
- ✓ Adjustable height shelves, coat hooks, clothes rails, etc.
- ✓ Benches
- ✓ Special solutions

## ADVANTAGES

- ✓ All metal doors: Double walled with honeycomb construction
- ✓ Waterproof or water-resistant
- ✓ Increased corrosion protection
- ✓ Sturdy and robust
- ✓ Dimensions and design variable
- ✓ Resistant against mechanical damage
- ✓ Completely non-flammable
- ✓ Functional
- ✓ Timeless design
- ✓ Stable value



# HYGIENE & COMFORT



## WATER

No standing water thanks to perforated floor with water-permeable protective mat (residual snow drains off - dirt stays inside the locker). Remove protective mats for easy and convenient cleaning.



lonisationsgerät



## VENTILATION / EXTRACT AIR / MOISTURE

Perforated floor and invisible door gap ensure an optimal locker climate. Optional top vent supports on-site ventilation or dehumidification (moisture and heat combined is the perfect breeding ground for bacteria, germs and mould).



Piuro



## ODOUR / DISINFECTION

Ioniser for easy and environmentally friendly odour elimination. Ionisation effect: Neutralises musty odour Improves the room climate through active oxygen Filtration of air particles / hygienic air disinfection.



Neutralizer ONE



Neutralizer und Neutralizer Pro









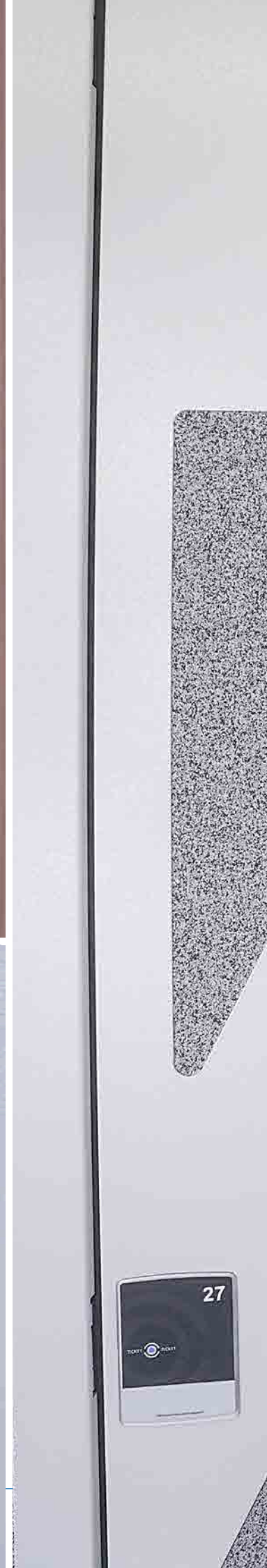














printed in  
**switzerland**



[facebook.com/montanasportinternational](https://facebook.com/montanasportinternational)



[youtube.com/skiservicemontana](https://youtube.com/skiservicemontana)



[instagram.com/montanasportinternational](https://instagram.com/montanasportinternational)

**MONTANA®**

**THE WORLD OF EXCELLENCE**

ski & board service machines | rental systems | skins

**MONTANA SPORT INTERNATIONAL AG**

Mühlebachstrasse 3 · CH-6370 Stans

Phone +41 (0)41 619 16 62

[info@montana-international.com](mailto:info@montana-international.com) · [montana-international.com](https://montana-international.com)

**MONTANA ITALIA S.R.L.**

via Goethe, 7 · IT-39012 Merano (BZ)

[info@montana-italia.it](mailto:info@montana-italia.it) · [montana-italia.it](https://montana-italia.it)

**MONTANA SPORT NORTH AMERICA INC.**

8 Federal Way · US-Groveland, MA 01834-1564

Phone +1 978 420 1700 · Fax +1 978 420 1701

[sthirkell@montanasportna.com](mailto:sthirkell@montanasportna.com) · [montanasportna.com](https://montanasportna.com)