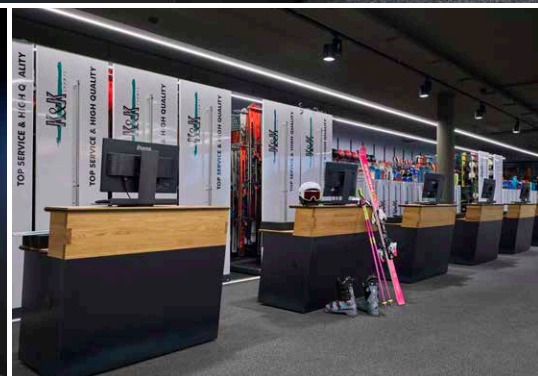
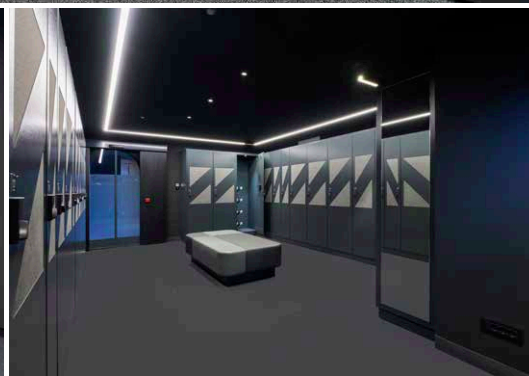
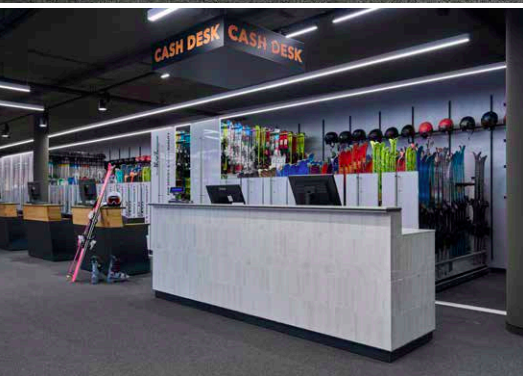




STORAGE & LOCKER SYSTEMS
THE WORLD OF EXCELLENCE



THE WORLD OF EXCELLENCE

We realize practical solutions

For the economical success of a rental operation and the service work shop, a professional planning of the total situation is of great importance. Based on our many years of experience, we can plan the best solution for you.

Our service is:

- › Positioning the storage systems based on the quantities which are requested
- › We do realize individual solutions following your shop concept
- › Producing proposals for the shop design
- › Creating plans (3D and high-quality visualization formats available on request)



CONTENTS

STORAGE SYSTEMS

The storage systems	6 – 7
Boot and helmet dryers	8 – 13
Speed Dryer	8
Boot / Helmet Rack Dryer Vario	9
Boot Rack / Helmet Rack	10
Boot Dryer	11
Disinfection equipment	12 – 13
Neutralizer and Neutralizer PRO / Neutralizer ONE	12
Ionization unit	13
Storage of skis and snowboards	14 – 20
Swingcarver	14
Service Rack and Presentation Rack	15
Universal	16
Universal Wall and Presentation Rack	17
Easy Hang	18 – 19
Snowboard	20
Storage of Ski Poles / Flip Clip / Accessories	21 – 23
Pole Rack	21
Flip Clip	22
Accessories	23
Establishment	24 – 27
Self Terminal	25
Consoles	27
ABS REFERENCES	28 – 31

LOCKER SYSTEMS

The locker systems	34
Sizes and capacities	35
Models	36 – 37
Custom solutions	40 – 41
Details	43
Locking variants / Interior fittings / Optional features	43
Seating	44 – 45
WOODY / SOLID / ELEGANCE	44
ROUND BENCH / DELUXE	45
Accessories	46 – 47
Presentation Rack / Universal Wall / Universal auf Rollen / Butler	46
Bike rack / Bike hook / Flip Clip	47
Mobile depot systems	50 – 52
Universal Depot	50
Convincing arguments	54
Hygiene and comfort	55

STORAGE SYSTEM

Efficient and innovative

For over 25 years, professionals around the world have relied on MONTANA when it comes to storing sports equipment. Our solutions stand for well-thought-out functionality, durable quality, and maximum efficiency in everyday use.



PERFECT PRESENTATION, PERFECT HANDLING

MONTANA's storage system shows off sports equipment to its best advantage. The ergonomically designed operation enables quick, safe, and convenient loading and unloading. The large, smooth-running casters are unique worldwide and ensure that the racks can be moved with little effort, even when fully loaded.



TOP QUALITY IN EVERY ASPECT

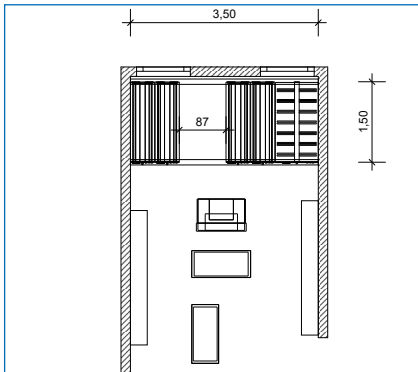
Made in Switzerland

The ABS shelves are manufactured entirely in Switzerland. Only high-quality materials and state-of-the-art manufacturing technologies are used.

All shelves and components are made of Sendzimir galvanized steel and V2A stainless steel and are additionally powder-coated. All RAL colors are available on request. Thanks to the cathodic protective effect, cut and punched edges are also permanently protected against corrosion.



2D-PLAN



Individual planning and design options

MONTANA supports you in all phases of project realization - from planning to implementation.

3D-PLAN



The projects are carefully planned for optimal use of space. If desired, 3D-visualizations can also be produced, which facilitate decision making considerably.

EXECUTION



It goes without saying that we also realise your individual colour and labelling wishes. In this way, the abs can be harmoniously integrated into any existing shop concept.



Powder coated with panel SUPERIOR



Powder coated with panel SMALL



Powder coated without panel

Individual combinations

Abs racks are available in various lengths:

- › 100 cm
- › 150 cm
- › 200 cm
- › 240 cm
- › 300 cm
- › Special dimension upon request

All racks with the same tracking system can be combined to a total length of 600 cm.

Freestanding racks can be combined in unlimited quantities.



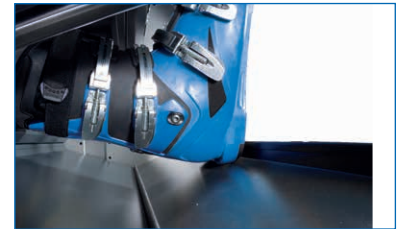
SPEED DRYER

FAN-POWERED AUTOMATIC-DRYER FOR SKI, SNOWBOARD AND CROSS-COUNTRY BOOTS

The high air-flow reduces the time of drying to an absolute minimum. The heat and ventilation aggregates are programmable and you can use either the standard warm air or room temperature air. Thanks to the option of having an automatic air stop for each drying position, you can save energy and use the warm air exactly where you need it.



SPEED DRYER powder-coated, with tray and screen as SUPERIOR and stainless-steel handrail



Optional
Drip tray for depot area (pluggable)



CAPACITIES SPEED DRYER	
HEIGHT	223 CM
150 cm	40 pairs / 240* pairs
200 cm	60 pairs / 360* pairs
240 cm	70 pairs / 420* pairs
300 cm	80 pairs / 480* pairs

HEIGHT		246 CM	
150 cm	44 pairs / 264* pairs		
200 cm	66 pairs / 396* pairs		
240 cm	77 pairs / 462* pairs		
300 cm	88 pairs / 528* pairs		

* Performance each day/24 hours. For boots that are wet to a normal degree, where humidity is between 40 and 60%. Duration: 4h/each pairs

POWER CONSUMPTION	BOOT SPEED DRYER	BOOT / HELMET RACK DRYER
Heating	1.500 watt / 4.500 watt	
Ventilation	240 watt	
Ventilation performance	approx. 500 m ³ /h / 630 m ³ /h*	

VOLTAGE	
Europe	1 x 230 V** / 3 x 400 Volt / 50 Hz / 7 A / 16 A
Norway	3 x 230 Volt / 50 Hz / 7 A
USA	1 x 110 V** / 240 Volt / 60 Hz / 19 A
Japan	3 x 200 Volt / 50/60 Hz / 8 A

DIMENSIONS		
Width	60 cm	50 cm
Height	223 cm / 246 cm	

* with 300 cm minimal heat output
** minimal heat output

BOOT / HELMET RACK DRYER VARIO

BOOT RACK WITH FAN-POWERED DRYER AND HELMET SHELF WITH AIR BLOWER DRYING

This rack combines the advantages of a conventional Boot Rack with the one of the fully automatic dryer. BOOT RACK / DRYER has an efficient, free programmable heating and air ventilation aggregate with a switch function for room ventilation or heating operation (identical with aggregate BOOT DRYER SPEED). The shelves are adjustable in a 5 cm grid.



Bluetooth only possible with OBELISK top3 with EU version



BOOT RACK DRYER
powder coated with drip tray and SUPERIOR panel and stainless-steel handrail

CAPACITIES BOOT RACK / DRYER*	
HEIGHT	223 CM / 9 LEVELS
150 cm	45 pairs
200 cm	58 pairs
240 cm	72 pairs
300 cm	90 pairs

CAPACITIES HELMET RACK DRYER	
HEIGHT	223 CM / 6 LEVELS
150 cm	72* – 78** pieces
200 cm	96* – 104 ** pieces
240 cm	120* – 130** pieces
300 cm	144* – 169** pieces

HEIGHT		246 CM / 10 LEVELS
150 cm	50 pairs	
200 cm	65 pairs	
240 cm	80 pairs	
300 cm	100 pairs	
* The capacity indication ist based on adult boots in size 27.5		

HEIGHT		246 CM / 7 LEVELS
150 cm	84* – 90** pieces	
200 cm	112* – 120** pieces	
240 cm	140* – 150 ** pieces	
300 cm	180* – 195** pieces	
* men helmets		
** women helmets		



Shelves with drying function
Warm air flows from the ventilation ducts to the bottom or top of the shelves.



Heating and aeration aggregate

- › The heating and aeration aggregate is located on the top
- › Aeration can be changed from air ventilation to room temperature or heating
- › Free programmable
- › With indicator of humidity
- › **4 years guarantee**



Rack shelves with drying function

Air flows from the ventilation channels on the lower side of the rack shelves.

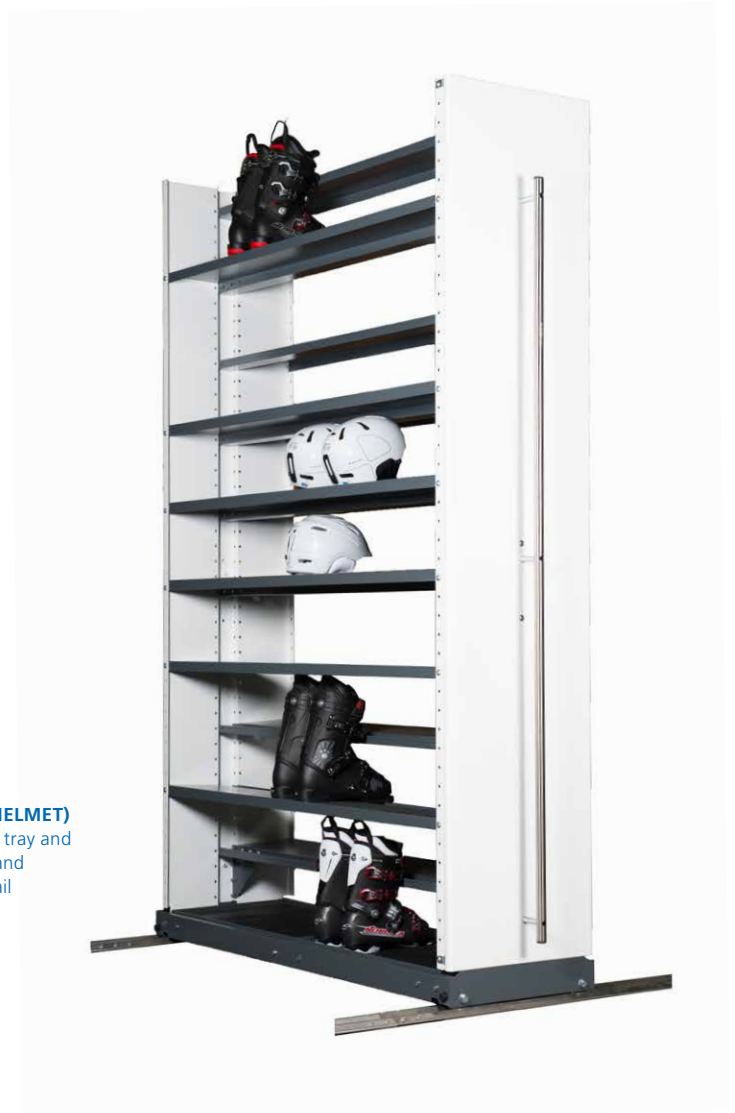


Digital timer programmable via app (for Android, iOS)

BOOT RACK / HELMET RACK

THE VERSATILE BOOT AND HELMET RACK

The Width of the shelves can be adjusted and they can be reversed, so providing the most efficient space for storing ski shoes, cross country ski shoes, snowboarding shoes, helmets, snowboard bindings, and much more.



MIX RACK (BOOT/HELMET)
powder-coated, with tray and screen as SUPERIOR and stainless-steel handrail

DIMENSIONS	
Width	50 cm
Height	223 cm / 246 cm

CAPACITIES	
The capacity indication ist based on adult boots in size 27.5	
Height	223 cm / 10 Levels
150 cm	60 pairs
200 cm	80 pairs
240 cm	100 pairs
300 cm	120 pairs

HEIGHT	246 CM
150 cm	66* – 72** pairs
200 cm	88* – 96** pairs
240 cm	110* – 120** pairs
300 cm	132* – 144** pairs
* with one additional shelf ** with two additional shelves (depending on shoe height)	

CAPACITIES	
Helmet (Size M)	
Height	223 cm / 6 Levels
150 cm	78 pieces
200 cm	104 pieces
240 cm	130 pieces
300 cm	169 pieces

HEIGHT	246 CM*
150 cm	90 pieces
200 cm	120 pieces
240 cm	150 pieces
300 cm	195 pieces
* with one additional shelf	

BOOT DRYER

FOR EVEN MORE COMFORT

Winter sports enthusiasts appreciate dry boots and warm feet. MONTANA offers various drying systems which use warm air or tubular heating for various applications.

They dry and warm winter sports boots of all types gently and in an environmentally friendly manner from the inside.

Both versions, E and A, are available as wall-mounted or free-standing models.

Version E supplies a maximum of four additional dryers with contact heat. Version A supplies a maximum of one additional dryer with warm air.



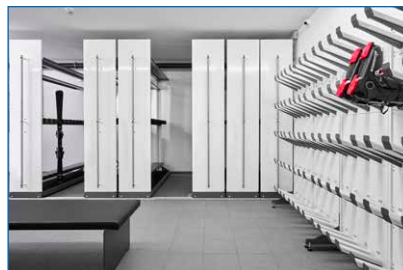
DRYER VERSION A
(warm air and stand optional)

SHELVES WITH IG FUNCTION
works from the ventilation elements on the lower side of the shelves.

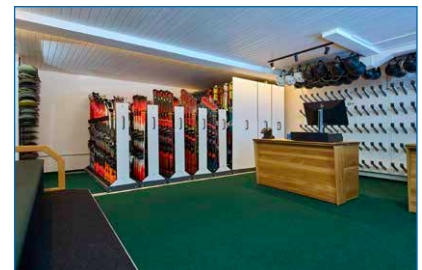
DOT DRYER VERSION E
with contact heat as a wall model



Ease of use



Hotel Landal



Skiverleih Madrisa



Timer switch

CAPACITY
10 pairs of ski, snowboard or cross-country ski boots

TECHNICAL DATA	VERSION E	VERSION A
----------------	-----------	-----------

POWER USAGE	VERSION E	VERSION A
When circulating air	-	100 watts
When heating	400 watts	Europe: 1.450 watts USA: 1.100 watts

ELECTRICAL SUPPLY DATA	VERSION E	VERSION A
Europe	230 V AC / 50 Hz	230 V AC / 50 Hz
USA	115 V AC / 60 Hz	115 V AC / 60 Hz

DIMENSIONS	VERSION E	VERSION A
Width	64 cm	64 cm
Height	175 cm	195 cm
Depth	48 cm	48 cm

NEUTRALIZER ONE

ENTRY-LEVEL MODEL

The Neutralizer ONE is the optimal entry-level model for disinfecting boots, helmets and gloves. Like its bigger brother, the Neutralizer One is made of stainless steel to ensure exceptional quality and durability. Its compact design and ease of use makes it particularly suitable for small and/or medium-sized shops & ski rentals.

ELECTRICAL SYSTEM	
Electrical supply data	100 – 240 V 1.0 A 50 – 60 Hz

DIMENSIONS	
Width	29 cm
Height (excl. table)	61.9 cm
Depth	46.3 cm
Empty weight	15.2 kg
Volume	5 l
Spray time	infinitely variable



NEUTRALIZER / NEUTRALIZER PRO

HYGIENE DEVICE FOR ALL TYPES OF BOOTS AND HELMETS

Disinfection system for all types of boots and helmets. With this easy to use unit you can easily sanitize your rental boots and helmets in an efficient way. Made of stainless steel.

Optimal spraying method

An even distribution of the sanitary products within the boots and helmets is guaranteed by 6 nozzles. Optionally you can purchase a table that allows you to work in perfect working height and gives you additional storage space.

Neutralizer Pro

The new Neutralizer Pro requires a external air supply. For permanent operation suitable.

ELECTRIC INSTALLATIONS	
Voltage	100 – 240 V 4.3 A 47 – 63 Hz

DIMENSIONS	
Width	40 cm
Height (without table)	64 cm
Depth	65 cm
Weight	29 kg
Volume capacity	4 l
Spray Time	Infinitely adjustable



IONIZATION UNIT

THE EFFICIENT SOLUTION FOR AIR PURIFICATION AND ODOUR ELIMINATION

Air treatment

MONTANA ionization units create a fresh and healthy climate that really motivates people. Concentration and performance levels increase, and fatigue is reduced.

Efficiency

A MONTANA ionization unit (Mod. 7-D-1i) purifies a room volume of about 290 m³. This corresponds to about 120 m² at a room height of 2.40 m. For larger rooms, the use of several units is recommended.

Air disinfection

The MONTANA ionization unit destroys up to 90% of all airborne germs, fungal spores and bacteria in an environmentally friendly manner.

Odor neutralization

Efficient ionization neutralizes unpleasant odors through effective micro-oxidation.



IONIZATION UNIT
also available with
wall mount on request

ELECTRICAL SYSTEM

Electrical supply data 230 Volt / 50 Hz

Power 35 Watt / 290 m³ / h

DIMENSIONS

Width 60 cm

Height 24 cm

Depth 14 cm

Empty weight 28 kg



SWINGCARVER

STORAGE AND PRESENTATION

The Swingcarver is the best way of storage for carving, fat and cross country skis. In an angle of 40° the skis will be perfectly presented.

Options with additional equipment

- › Rack bottoms
- › Easy Hang
- › Flip Clip



SWINGCARVER powder coated with drip tray and SUPERIOR panel and stainless-steel handrail

SWINGCARVER with carriage on wheels



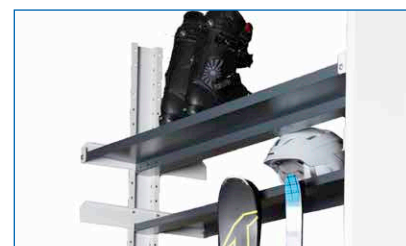
Swingcarver holding system

The bows hold the skis safe and with care. The easy to use mechanism saves time when skis come in and go out.

DIMENSIONS	
Width	50 cm
Height	146 cm / 223 cm / 246 cm



Cross bar with pole holders
To be used with high columns.



Shelves
In conjunction with high columns.

CAPACITIES	STANDARD Receptacle width: 10,5 cm	WIDE BODY SKI Receptacle width: 15 cm ¹
100 cm*	12 pairs ski	10 pairs ski
150 cm	20 pairs ski	16 pairs ski
200 cm	28 pairs ski	22 pairs ski
240 cm	34 pairs ski	28 pairs ski
300 cm	40 pairs ski	32 pairs ski

* Rack only with under carriage on wheels
¹ Additional dimensions available on request

SERVICE RACK

Workshop trolley

For approx. 30 pairs of skis. Drip tray with drain hose. Including rubber mat. Undercarriage with 4 casters, 2 with brakes.

DIMENSIONS	
Width	120 cm
Height	147 cm
Depth	80 cm

CAPACITIES	
approx. 30 pairs ski	



TRANSPORT RACK

Transport trolley

Offers space for a wide range of sports equipment. Tub with drain incl. rubber mat. Chassis with 4 swivel castors, 2 of them with brake.

DIMENSIONS	
Width	77cm / 117 cm
Length	142 cm
Height	193 cm

CAPACITIES	
at least 36 pairs of skis or 24 snowboards	



UNIVERSAL

THE UNIVERSAL STORAGE SYSTEM

In this system, a great number of variable ski types and boards can be stored in a minimum space.

UNIVERSAL can be used for alpine, carving, cross country skis and snowboards. This storage system is easy to handle and enables a fast and easy loading and unloading.

The ideal solution for ski back passes in rental operation and in service workshops.

The inclined lower metal shelf and the upper bars can easily be height adjusted. That means that shorter sport gear such as children skis can also be stored.

Option

- › Boot shelf
- › Easy Hang
- › Flip Clip
- › Undercarriage with swivelling wheels



UNIVERSAL powder coated with panel SUPERIOR and stainless-steel handrail



UNIVERSAL 2 levels, powder coated with panel SUPERIOR

DIMENSIONS	
Width	45 cm
Height	146 cm / 223 / 246 cm

CAPACITIES*	
100 cm**	approx. 16 Pairs Ski
150 cm	approx. 24 Pairs Ski
200 cm***	approx. 34 Pairs Ski
240 cm	approx. 42 Pairs Ski
300 cm	approx. 50 Pairs Ski

* At an average ski width of 115 mm
 ** Rack only with under carriage on wheels
 *** Capacity cross-country skis approx. 78 pairs



UNIVERSAL is adjustable in width and height



UNIVERSAL WS 100 cm / 150 cm

UNIVERSAL WALL

THE SPACE SAVING WALL RACK

UNIVERSAL WALL is made of powder coated steel sheet. It is bolted to the wall and has room for all kind of skis or boards.

UNIVERSAL WALL is perfect for outdoor and indoor use.



DIMENSIONS	
Width	25 cm
Height	143 cm

CAPACITIES*	
100 cm	approx. 8 Pairs Ski
150 cm	approx. 12 Pairs Ski
*) at an average ski width of 115 mm	

UNIVERSAL WALL can be extended with extension elements

PRESENTATION RACK

FOR THE IDEAL APPEARANCE OF SKI AND SNOWBOARD

This representative rack is suitable for use in sales, rentals, and as a depot.

The versatile arrangement options also make the PRESENTATION RACK excellent as a guidance system.

The Presentation Rack comes in Inox as a standard option.

DIMENSIONS	
Width	30 cm / 80 cm
Height	120 cm
Depth	50 cm



EASY HANG

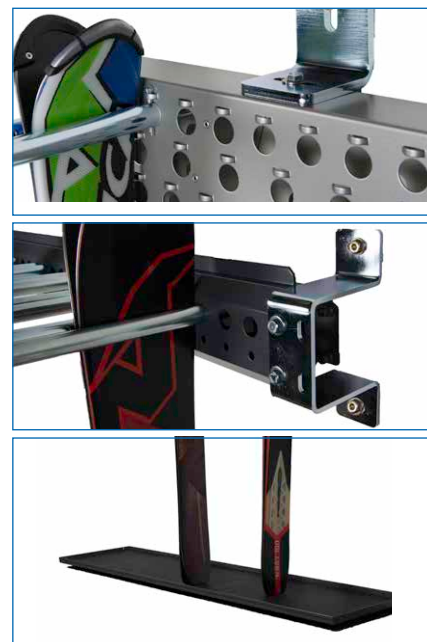
THE VERSATILE HANGING SYSTEM FOR ALL SKI TYPES

The module system gives the possibility to store any kind of skis and snowboards on minimum space. Thanks to the individually adjustable supports, also children skis, snowblades and fun boards can be stored clearly arranged in a space saving way.

EASY HANG powder coated with drip tray, panel SUPERIOR and stainless-steel handrail. Equipped with 1 Vario cross bar.



Also available for wall mounting:



Versions with 2 levels

DIMENSIONS	
Width	80 cm
Height	223 cm (246 cm)

CAPACITIES*	adults**	children***
150 cm	36 - 54 pairs ski	104 - 144 pairs ski
200 cm	48 - 72 pairs ski	144 - 192 pairs ski
240 cm	60 - 84 pairs ski	176 - 224 pairs ski
300 cm	72 - 108 pairs ski	224 - 288 pairs ski

Capacities depending on arrangement

Versions with 3 - 4 levels

DIMENSIONS	
Width	80 cm
Height	246 cm (to 300 cm)

Important: The supports must be raised on these versions

CAPACITIES*	adults**	children***
150 cm	36 - 72 pairs ski	96 - 192 pairs ski
200 cm	54 - 108 pairs ski	132 - 264 pairs ski
240 cm	63 - 126 pairs ski	156 - 312 pairs ski
300 cm	78 - 156 pairs ski	192 - 384 pairs ski

Versions wall mounting

DIMENSIONS	
1 - row	
5 - row (4-pole)	

CAPACITIES*	adults**	children***
100 cm	12 pairs ski	16 pairs ski
150 cm	18 pairs ski	24 pairs ski
100 cm	min. 12 pairs ski	16 pairs ski
150 cm	min. 18 pairs ski	24 pairs ski

* Stepped hanging with additional equipment and highth 240 cm

** 3 pairs of ski per position

*** 4 pairs of ski per position

VARIABLE WAY OF HANGING

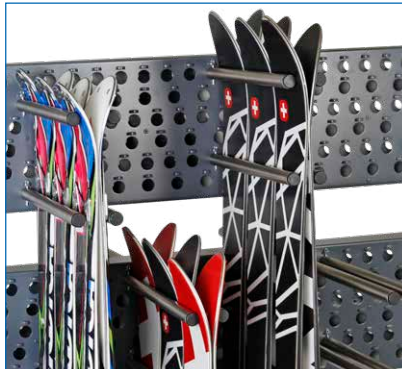
4-point hanging system on 2 bars

For a most efficient use of the capacities for skis and snowboards.

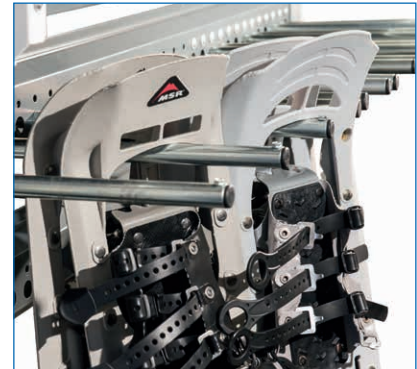


4-point hanging system on 2 bars

Individually adjustable in height.



Suspension for snow shoes



Drip trays wit rubber mat

Made of sendzimir galvanized, powder coated steel to hold the mealted water. are part of the delivery.



Suspension with split pin

Fast and easy adjusting of the suspensions without tools.



suspention screwed

Individual adjusting of the suspension.



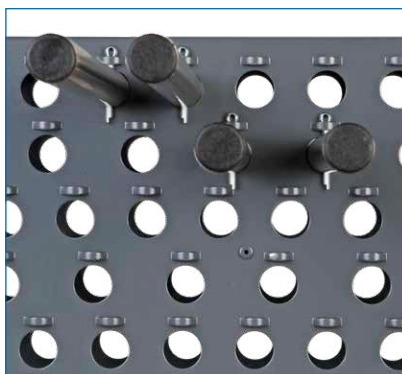
6-row bar with suspension

Storage for all actual ski models (incl. skis with special top constructions) thanks to the perforated hole system is possible.



6-row bar with suspension

Optimized hole arrangement for a full capacity. and skis with special surfaces.



SNOWBOARD

THE VARIABLE SNOWBOARD RACK

SNOWBOARD powder coated with basket for bindings and additional shelves

Stoppers
Easy to use stoppers keep the snowboards safely in position.



SNOWBOARD RACK powder coated on the adjustable holders, snowboards with and without mounted bindings can be stored. Panel SUPERIOR and stainless-steel handrail

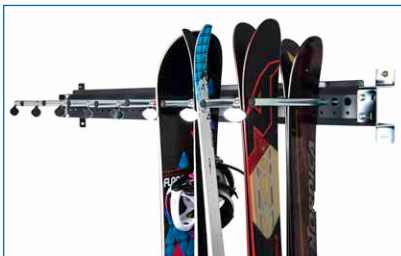
SNOWBOARD MIX RACK powder coated with two cross bars, shelves, drip tray and panel SUPERIOR and stainless-steel handrail

DIMENSIONS	
Width	70 cm
Height	223 cm / 246 cm

CAPACITIES	WITH (SOFT-) BINDINGS*	WITHOUT BINDINGS**
150 cm	16 – 20 snowboards	68 snowboards
200 cm	22 – 28 snowboards	90 snowboards
240 cm	28 – 34 snowboards	106 snowboards
300 cm	32 – 40 snowboards	136 snowboards

* standard assembly
** with additional brackets

Also available for wall mounting:



CAPACITIES WALL MOUNTING	WITH (SOFT-) BINDINGS*	WITHOUT BINDINGS**
100 cm	5 snowboards	22 snowboards
150 cm	8 snowboards	34 snowboards

* standard assembly
** with additional brackets



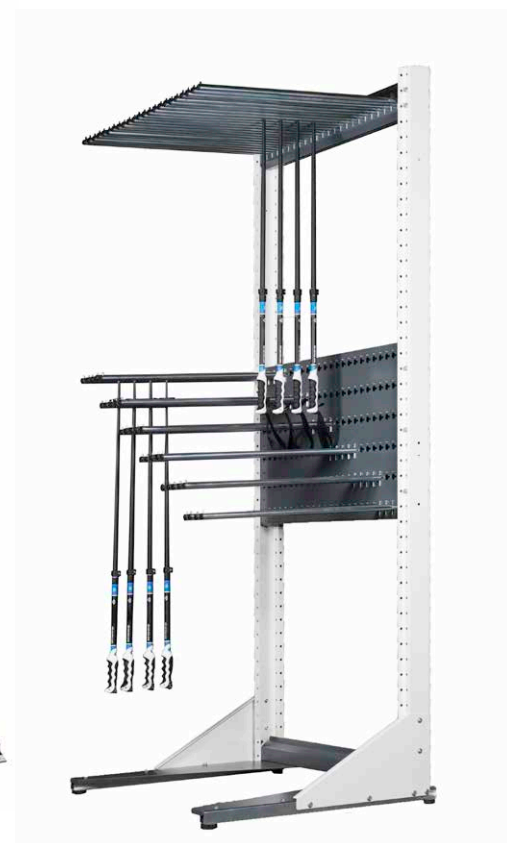
POLE RACK

THE FLEXIBLE STORAGE OF SKI AND CROSS COUNTRY POLES

These pole racks with height adjustable holders can be used to store short sport units e.g. children skis, snow blades or fun carver.

DIMENSIONS POLE RACK	
Width	80 cm
Height	223 cm / 246 cm

DIMENSIONS POLE RACK WALL	
Width	80 cm
Height	240 cm



POLE RACK powder coated with drip tray and panel SUPERIOR and stainless-steel handrail. Equipped with 1 serial standard cross bar and 1 optional Vario cross bar

POLE RACK WALL powder coated, height 240 cm. Equipped with 1 standard and 1 Vario cross bar.

CAPACITIES	POLE RACK (divider ~ 60 mm) 1 Level	POLE RACK (divider ~ 60 mm) 2 Levels	POLE RACK WALL
100 cm	–	–	240 pairs
150 cm	180 pairs	360 pairs	360 pairs
200 cm	240 pairs	480 pairs	–
240 cm	288 pairs	576 pairs	–
300 cm	360 pairs	720 pairs	–

Also available for wall mounting:

CAPACITIES WALL MOUNTING	
100 cm	120 pairs
150 cm	180 pairs



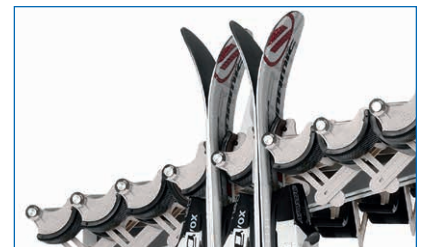
FLIP CLIP CROSS BARS

THE GREAT STORAGE SYSTEM

In FLIP CLIP you can store basically any winter sport gear. It is presented in an angle of 40°. The items are held secure and are easy and fast to use.

FLIP CLIP cross bars can be added to any abs rack.

CAPACITIES	
per cross bars	
150 cm	22 pairs
200 cm	30 pairs
240 cm	36 pairs
300 cm	44 pairs



FLIP CLIP cross bars combined with **UNIVERSAL**, height 246 cm.

FLIP CLIP cross bars can be added to any abs rack.

FC - Universal rack with cover Superior and stainless-steel handrail.

FLIP CLIP WALL MOUNTING SYSTEM

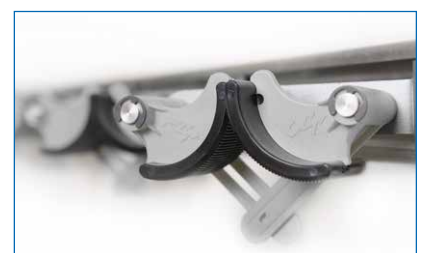
FLIP CLIP elements are available in straight or with 40° version and are available as follows:

- › Single elements (quantity to be selected)
- › 3 units (Trio) incl. 50cm of mounting rail
- › 5 units (Quintett) incl. 95cm of mounting rail
- › Mounting rails in the length of 100 and 200 cm

For an easy storage of ski and snowboards



FLIP CLIP Trio straight version with rail, wall mounted



FLIP CLIP 40° on rail max. 7 piece per meter



Click rail



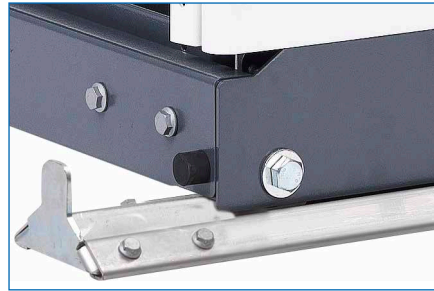
FLIP CLIP straight on rail max. 5 piece per meter

ACCESSORIES

EQUIPMENT OPTIONS AND ACCESSORIES INCREASE THE USE OF YOUR RACK.



Roller chassis



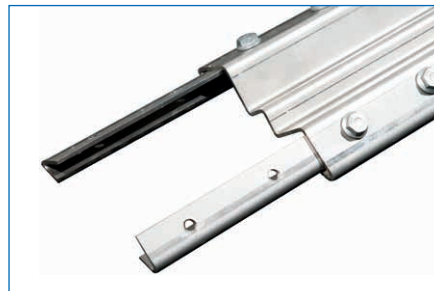
Runner rail
made of chrome steel



Rail mechanism
diameter of rollers 60 cm



End stops made of stainless steel
for rails



Rail connectors made of stainless steel
for rails



Rack stop
trolley stops for rails that are screwed into position



Traverses
sendzimir-galvanized and powder-coated



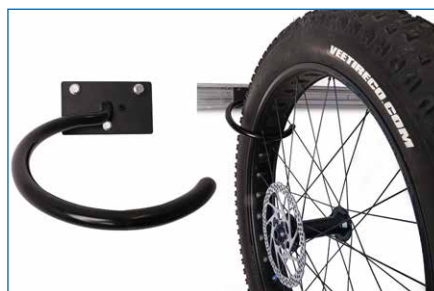
Traverse with clothes rail
EASY HANG can be readily equipped with accessories such as this traverse with a clothes rail



Traverse with eyebolts
for securing the ski with a cable lock



Rubber coating
for the upper holding rods on the UNIVERSAL help prevent items loaded on it from slipping



Bike hook with rim guard for Fat Bike
for abs traverse



MONTANA abs – bicycle parker
minimum order quantity of 3

INSTALLATIONS

As a specialist partner of rental outlets, depots and shops, we offer a wide range of fittings.

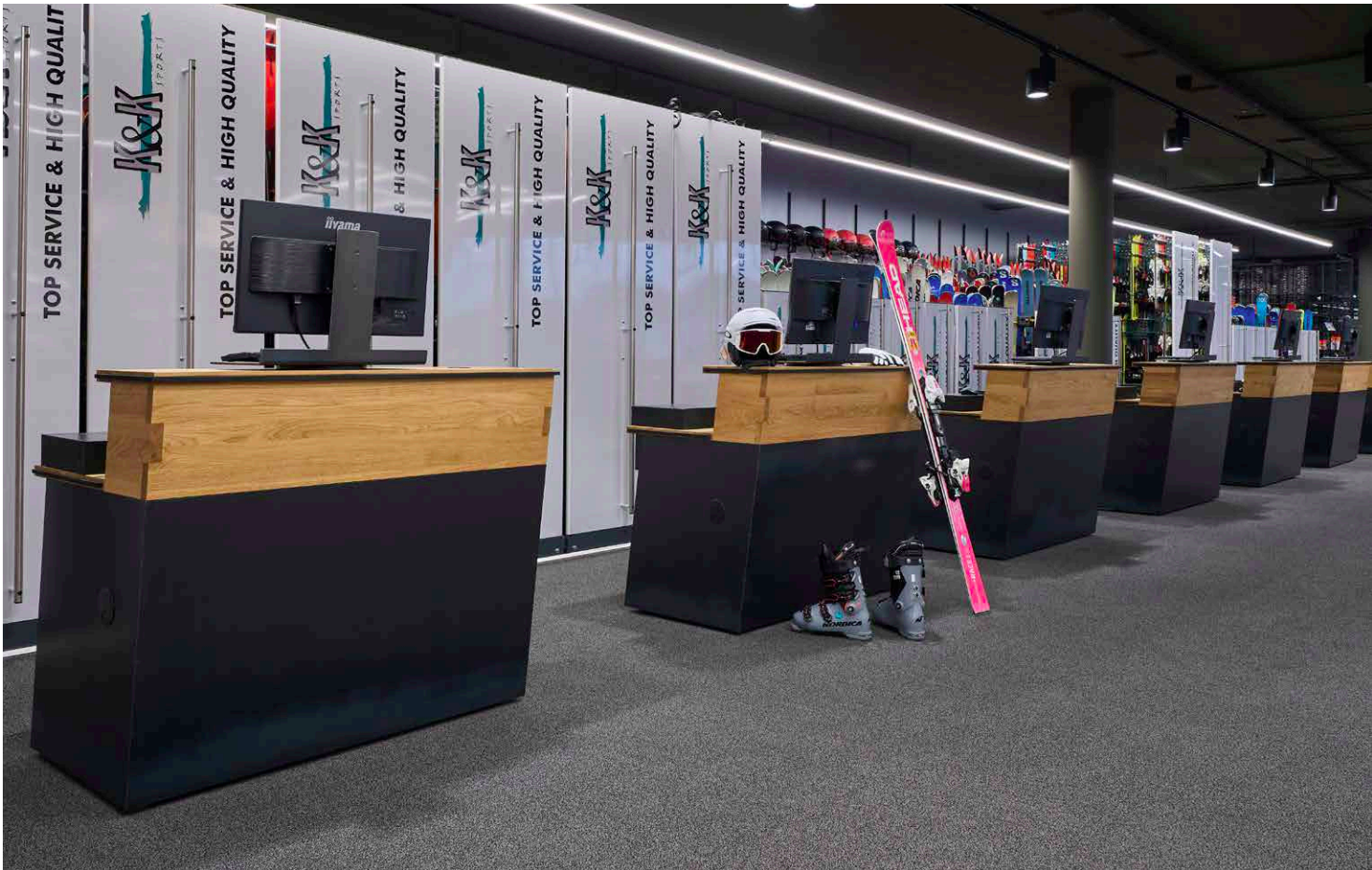
As you would expect, all furniture is available in custom colors and comes with integrated cable channels.



Individually designable possibilities of the covers.

Of course, all our furniture is available in individual colors and all have integrated cable channels.

SELF TERMINAL



Desks with individual design options

ELEGANT AND SOLID DESK FOR THE SELF SERVICE CHECK-IN

High desk with touch screen monitor and web cam. Lockable PC and printer case.

Option

- › Terminal with touch screen, built in PC and webcam

Desk

DIMENSIONS	
Width	40,5 cm
Height	102,5 cm
Depth	46,0 cm
Weight	approx. 25 kg



VERLEIH



CONSOLES



DUAL console

DUAL console

The console, which can be operated from both sides, enables two people to work efficiently in a very confined space.

DIMENSIONS	
Width	171 cm / 192 cm
Height	91 cm
Depth	90 cm

Individual construction possibilities

Consoles by MONTANA

Practical furniture in solid construction and modern design. Thanks to height adjustable support and the adjustment positions for left and right handed people, efficient work is possible at these tables. On request the tables are available with adjustable height and turntable holders for the PC terminals.



UNIVERSAL console

UNIVERSAL console

DIMENSIONS	
Width	150 cm
Height	99 cm
Depth	73 cm

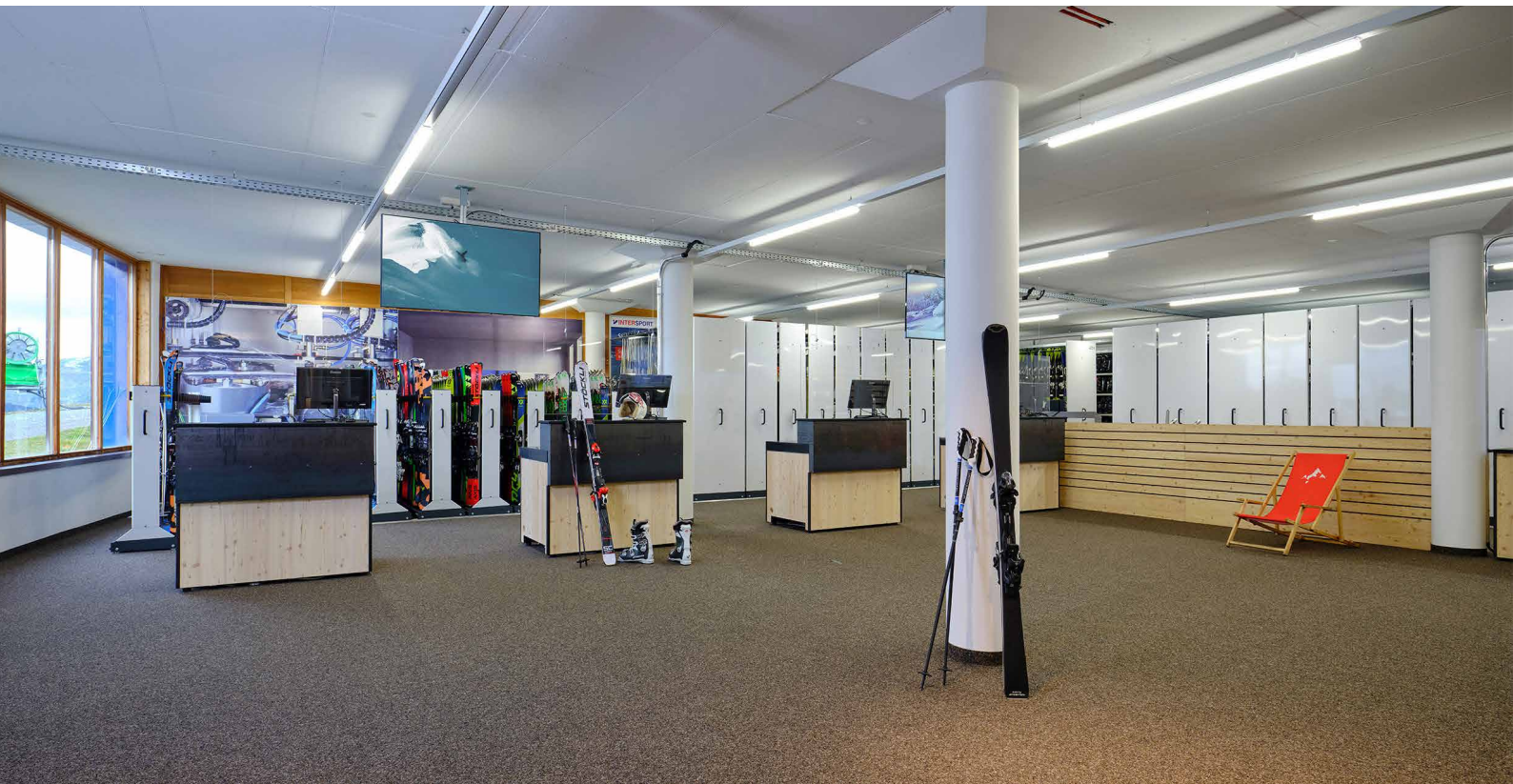
COMPACT console

DIMENSIONS	
Width	75 cm
Height	90 cm / 115 cm
Depth	60 cm

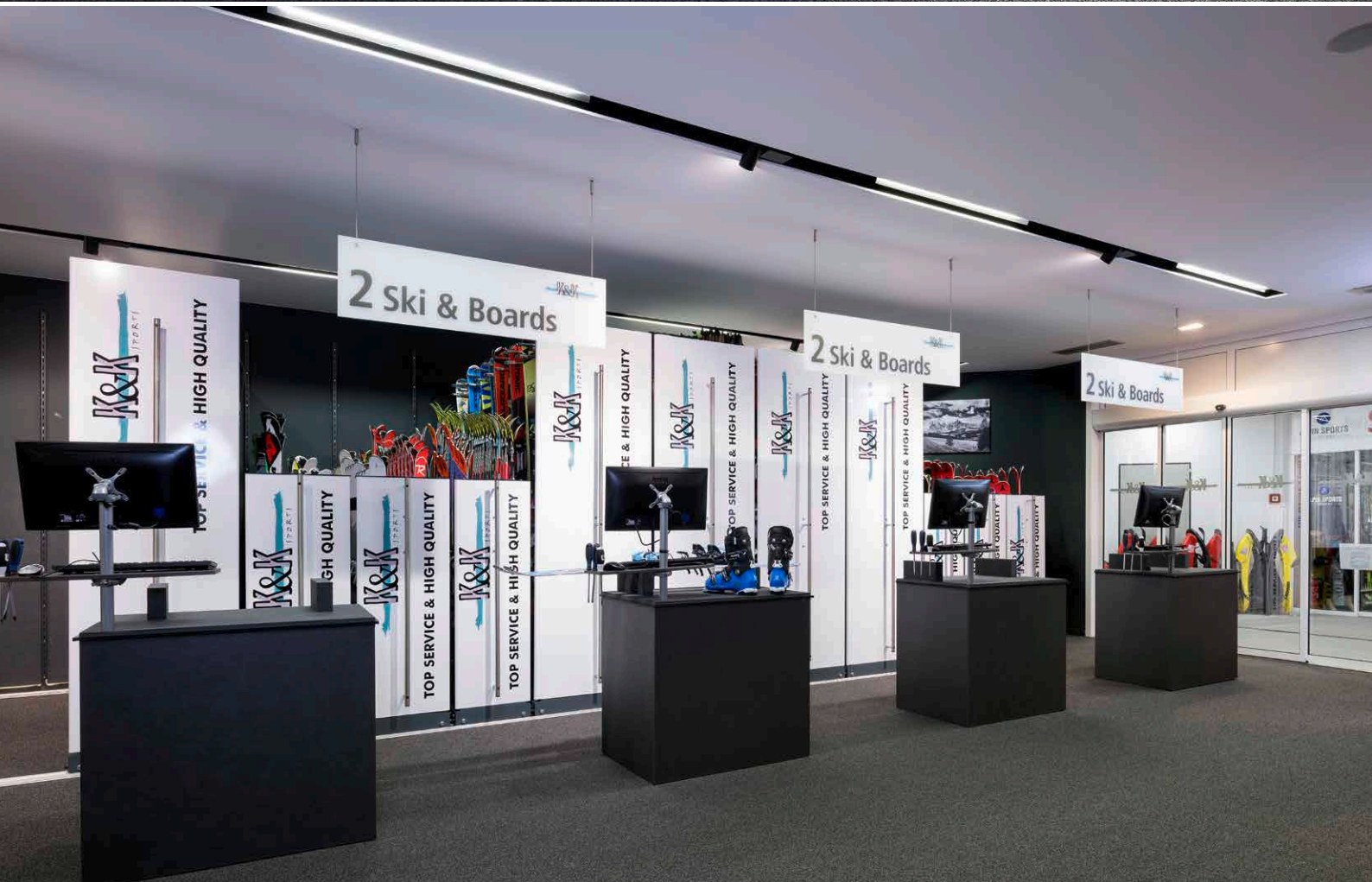
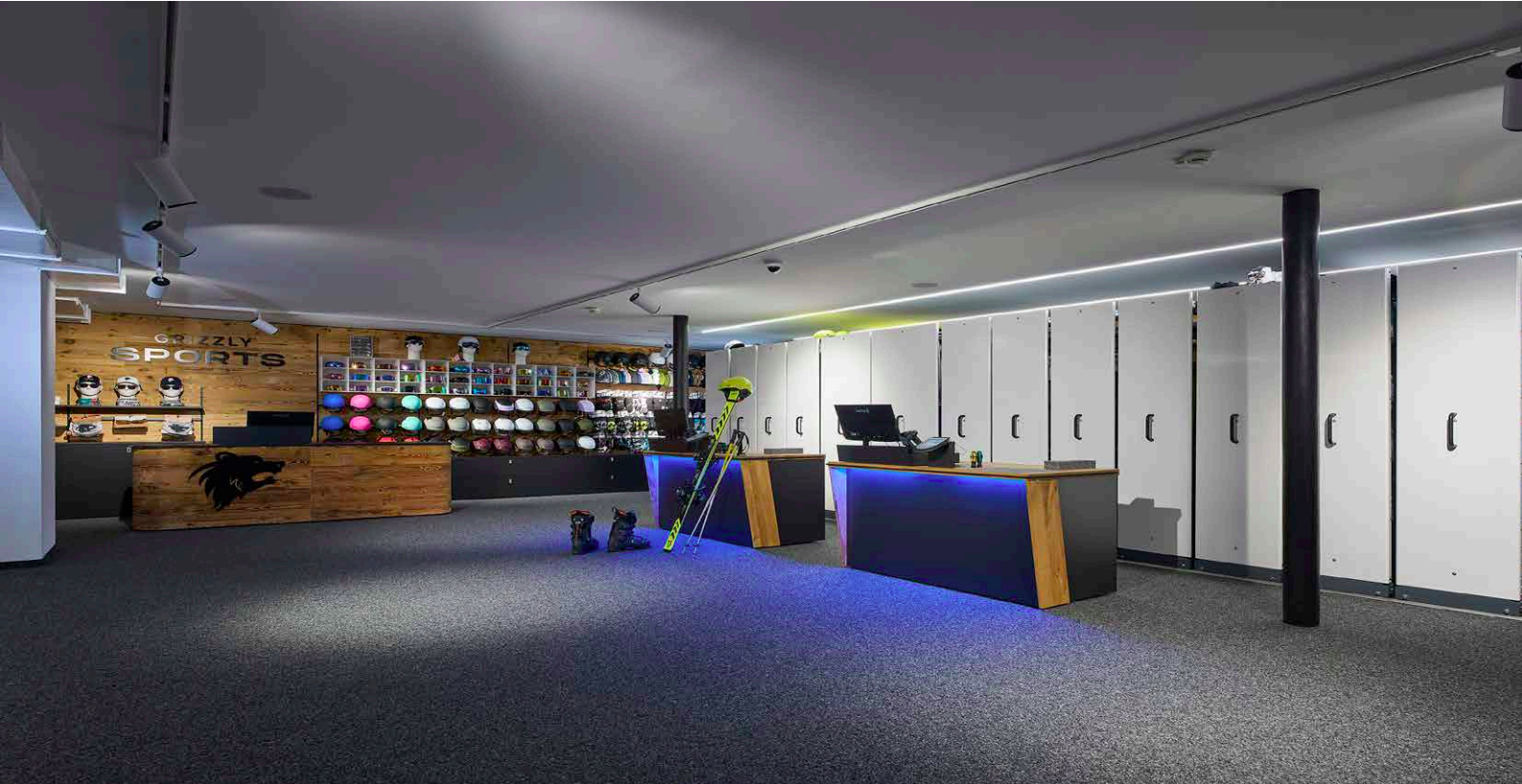
SEATING

› S. 44 - 45



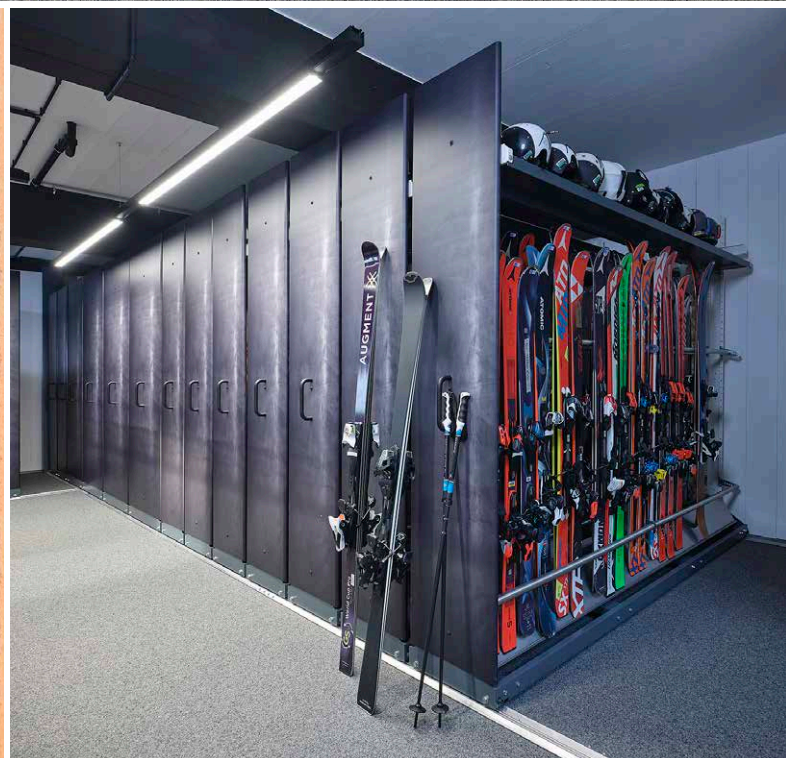
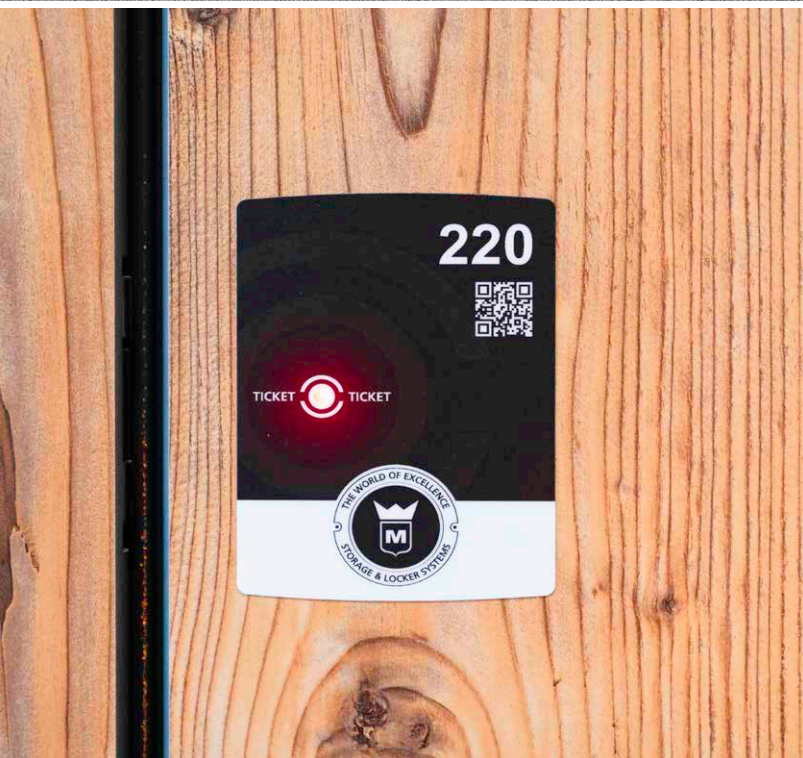


REFERENCES ABS





REFERENCES ABS







LOCKER SYSTEMS

DEPOT SYSTEM

The DEPOT SYSTEMS ensure comfortable storage and dry ski equipment in the ski depots of rental stations, mountain railways, private homes and hotels.

CUSTOM SOLUTIONS

Be inspired by the unique and diverse material combinations as well as custom design options. With the depot systems, your ski depot turns into a true eye-catcher providing your customers with a guaranteed sense of comfort and well-being.

Whether you require a simple combination lock or a fully networked lock system: the locking variants of the depot systems are versatile and tailored to your specific needs. In addition, you can optionally add custom logos or emblems to the outside of the depot lockers.

MONTANA offers a wide range of accessories and extras for even more comfort at the ski depot.

COMFORT AND CLEANLINESS

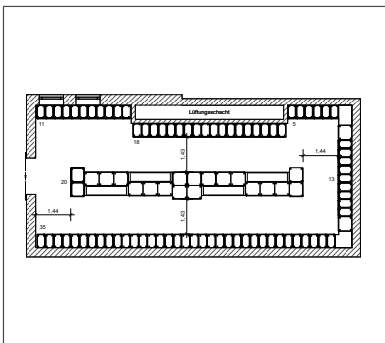
The convenient and hygienic storage of winter sports equipment is key for any ski depot. Depot lockers feature an ingenious design for removing water and moisture to ensure the locker or room climate is always optimal.

FULL SUPPORT

From planning to the first day of the coming season. MONTANA supports you during all stages of project implementation and offers continued support following installation to ensure the depot system can be put into service without a problem.

GOOD PLANNING IS HALF THE BATTLE

Projects are carefully planned to make optimal use of the available space. On request we will prepare 3D images to make decisions related to the layout and design a lot easier.



2D plans



3D plans and high-quality visualizations



Implementation

SIZES AND CAPACITIES



Dimensions / Technical Data	
Width	Varies by design
Height	215 cm with enclosed base 220 cm with support
Depth	56 cm
Power	60 watt / 120 watt

Capacities	30 cm	35 cm	40 cm	45 cm	60 cm	65 cm	70 cm
Pairs of skis / snowboards	2	2 / 2+1	0	3	4 / 5	4 / 5	4 / 5
Pairs of ski poles	2	2 / 2+1	0	3	4 / 5	4 / 5	4 / 5
Shoes	2	2 / 2+1	4	3	4 / 5	4 / 5	4 / 5
Helmets	0	2 / 2+1	4	3	4 / 0	4 / 0	4 / 0
Gloves (optional)	0	2 / 2+1	0	3	4 / 0	4 / 0	4 / 0

Additional dimensions and layouts available on request

MODELS

DEPOT LOCKERS FOR THE ENTIRE SKI EQUIPMENT



Ski locker type 30 cm
for 2 sets of ski gear



Ski locker type 35 cm
for 2 sets of ski gear

Ski locker type 35 cm 2+1
for ski gear of
2 adults and 1 child



Ski locker type 45 cm
for 3 sets of ski gear



Ski locker type 60 cm
for 4-5 sets of ski gear



Ski locker type 65 cm
for 4-5 sets of ski gear



Ski locker type 70 cm
for 5 sets of ski gear

DEPOT LOCKERS FOR HELMETS AND GLOVES



Ski locker type 40 cm (4x1)
for 1 pair of ski boots and
1 ski helmet



Ski locker type 40 cm (2x2)
for 2 pairs of ski boots and
2 ski helmets

MODELS

CHOOSE YOUR PERSONALISED WARDROBE FITTINGS







CUSTOM SOLUTIONS

Custom sizes, materials and designs available, depending on your requirements:



BODY: STEEL SHEET

DOOR: STEEL SHEET

DOUBLE WALLED WITH HONEYCOMB CONSTRUCTION

Standard colors steel sheet

On request



RAL 7016
anthracite grey



RAL 9005
deep black



RAL 9016
traffic white



RAL 7011
iron grey



Included in the price

PROPERTIES

- ✓ Galvanized and powder-coated metal lockers
- ✓ Steel thickness: 1.0 - 1.5 mm
- ✓ Available in various RAL colours



BODY: STEEL SHEET

DOOR: HPL

Standard colors for HPL doors



2001
white

2002
silver-grey

2004
anthrazit

2007
atlantic

2008
plum



0265
walnut

0921
silver spruce brown

5173
barrique oak NT

4047
virginia oak mito

PROPERTIES

✓ Metal lockers combined with
HPL solid core panel

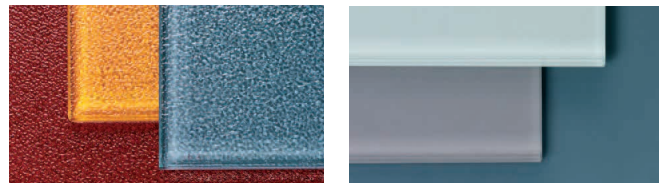
✓ HPL 13 mm

✓ Available in various colours and designs



BODY: STEEL SHEET

DOOR: GLASS



PROPERTIES

✓ Safety glass 10 mm

✓ Smooth, clear, ornamented, coloured

✓ Motifs (embedded or stoved)



DETAILS

LOCKING VARIANTS



Network lock glass door



Network lock with 2 USB ports and LED lighting



Cylinder lock



Digilock Aspire

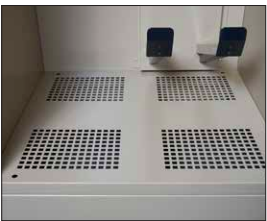


Euro Locks Zenith

INTERIOR FITTINGS



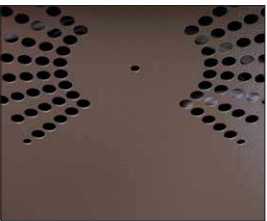
Boot dryer with optional glove dryer



Perforated floor



Removable, water-permeable floor mat



Vents in the ceiling for ideal locker climate

OPTIONAL FEATURES



Design on HPL or glass door available



Emblem with custom logo



Net and hook



LED lighting



Closed pedestal



Open pedestal



Pitched roof



Mirror on side



Mirror inside the door

SEATING

The various seating options offer optimal and compact installation in any depot. The SOLID and WOODY benches offer an impressive variability and are extremely robust. On the other hand, the ELEGANCE bench offers a simple, yet timeless design.

MONTANA has years of experience, allowing us to offer custom furnishing options that are tailored exactly to the desired functionality and preferred look of your depot.



The WOODY bench features a simple and robust construction.

WOODY

The WOODY features a simple design. The wood adds character to the depot. The bench width is variable to allow using it from one side or both sides.

Models / Dimensions	
Length	100 cm / 150 cm / 200 cm
Width	30 / 50 cm
Height	44 cm



The SOLID bench features a robust construction and a timeless design.

SOLID

The SOLID bench features an impressive tough construction and a timeless design. The 45 cm deep bench further has enough room to be used from both sides. The colour of the faux leather can be selected to match your interior.

Models / Dimensions	
Length	110 cm / 150 cm / 200 cm
Width	45 cm / 60 cm
Height	44 cm



The ELEGANCE bench features a simple design and boasts a variety of uses.

ELEGANCE

The ELEGANCE bench features an impressive simple design and a variety of uses. The bench is also deep enough to be used from both sides. The colour of the faux leather can be selected to match your interior.

Models / Dimensions	
Length	110 cm / 150 cm / 200 cm
Width	45 cm
Height	44 cm

Other dimensions available on request



Round bench with two-piece construction

ROUND BENCH

Elegant round bench in a two-piece construction. Attractive seating for a special visual highlight.

MODELS / DIMENSIONS	
Diameter	149 cm
Hight	45 cm



incl. platform and 2 drawers,
available in any dimensions and material

DELUXE

All sides of the platform are clad in black steel. Solid, finger jointed drawers are worked into the platform. The seat and backrest feature high-quality padding covered with leather.

MODELS / DIMENSIONS	
Length	449 cm
Depth	110 cm
Hight	138 cm

ACCESSORIES

MONTANA offers accessories as the perfect add-on to offer winter sportsmen and sportswomen maximum comfort. The PRESENTATION RACK or UNIVERSAL WALL storage systems are the ideal solution to temporarily store winter sports gear. With the UNIVERSAL ON WHEELS or the BUTLER 2, objects can easily be transported from one place to the other.



PRESENTATION RACK

To briefly hold skis and snowboards. The versatile arrangement options also make the PRESENTATION RACK excellent as a guidance system.

Models / Dimensions	
Width	120 cm / 30 cm
Depth	80 cm
Height	50 cm



UNIVERSAL WALL

UNIVERSAL WALL is excellent for indoor and outdoor use. The shelving anchors to the wall and offers room for different skis and snowboards at least 100 cm long.

Models / Dimensions	
Width	100 cm / 150 cm
Height	143 cm
Depth	25 cm



UNIVERSAL ON WHEELS

Use the MONTANA UNIVERSAL ON WHEELS to store a large number of different skis and snowboards in a small space whilst remaining mobile.

Models / Dimensions	
Width	100 cm / 150 cm
Depth	45 cm
Height	146 cm



BUTLER

The transport and collection cart with wheels offers room for the entire ski gear of up to 6 persons. Optionally available with helmet storage and shelves for goggles and gloves.

Models / Dimensions	
Width	50 cm
Depth	100 cm
Height	155 cm

Optional: 6 helmets, 6 pairs of gloves and goggles



BIKE RACK

The MONTANA bike rack takes up little space, creates order and offers safe storage for your bikes. The system is self-supporting and expandable. Even kids' bikes are easy to store.



BIKE HOOK

Bike hook with rim guard for Fat Bike. MONTANA optionally offers the bike hook with FLIP CLIP mounting rail. This allows you to combine it with the FLIP CLIP system for skis and snowboards.



FLIP CLIP

Ski and snowboard wall storage made easy. The FLIP CLIP elements are available in straight and 40° designs.







UNIVERSAL DEPOT

The UNIVERSAL DEPOT holds different types of skis plus poles. The easy to handle, adjustable height storage system is easier to use. The top lengthwise shelving can be equipped with lock system.

Each shelving unit is customised and available as a floor unit or including a rail mechanism.



UNIVERSAL DEPOT
powder-coated with
SUPERIOR trim

Dimensions	
Length	150 cm - 300 cm
Width	70 cm
Height	141 cm

Capacities	
Variable, depending on length	



Practical pole holder



Secure lock



Digital lock system



CONVINCING ARGUMENTS

ACCESSORIES AND EXTRAS

- ✓ Lock systems and manufacturers of choice
- ✓ Electrical heating – environmentally friendly – energy-efficient – gentle on materials
- ✓ Optionally available with air drying
- ✓ Sturdy surfaces
- ✓ Connection cover
- ✓ Adjustable height shelves, coat hooks, clothes rails, etc.
- ✓ Benches
- ✓ Special solutions

ADVANTAGES

- ✓ All metal doors: Double walled with honeycomb construction
- ✓ Waterproof or water-resistant
- ✓ Increased corrosion protection
- ✓ Sturdy and robust
- ✓ Dimensions and design variable
- ✓ Resistant against mechanical damage
- ✓ Completely non-flammable
- ✓ Functional
- ✓ Timeless design
- ✓ Stable value



HYGIENE & COMFORT



WATER

No standing water thanks to perforated floor with water-permeable protective mat (residual snow drains off - dirt stays inside the locker). Remove protective mats for easy and convenient cleaning.



lonisationsgerät



VENTILATION / EXTRACT AIR / MOISTURE

Perforated floor and invisible door gap ensure an optimal locker climate. Optional top vent supports on-site ventilation or dehumidification (moisture and heat combined is the perfect breeding ground for bacteria, germs and mould).



ODOUR / DISINFECTION

Ioniser for easy and environmentally friendly odour elimination. Ionisation effect: Neutralises musty odour Improves the room climate through active oxygen Filtration of air particles / hygienic air disinfection.



Neutralizer ONE



Neutralizer und Neutralizer Pro









407

406

405

367

366

365

364

363

362

361

350

311

310

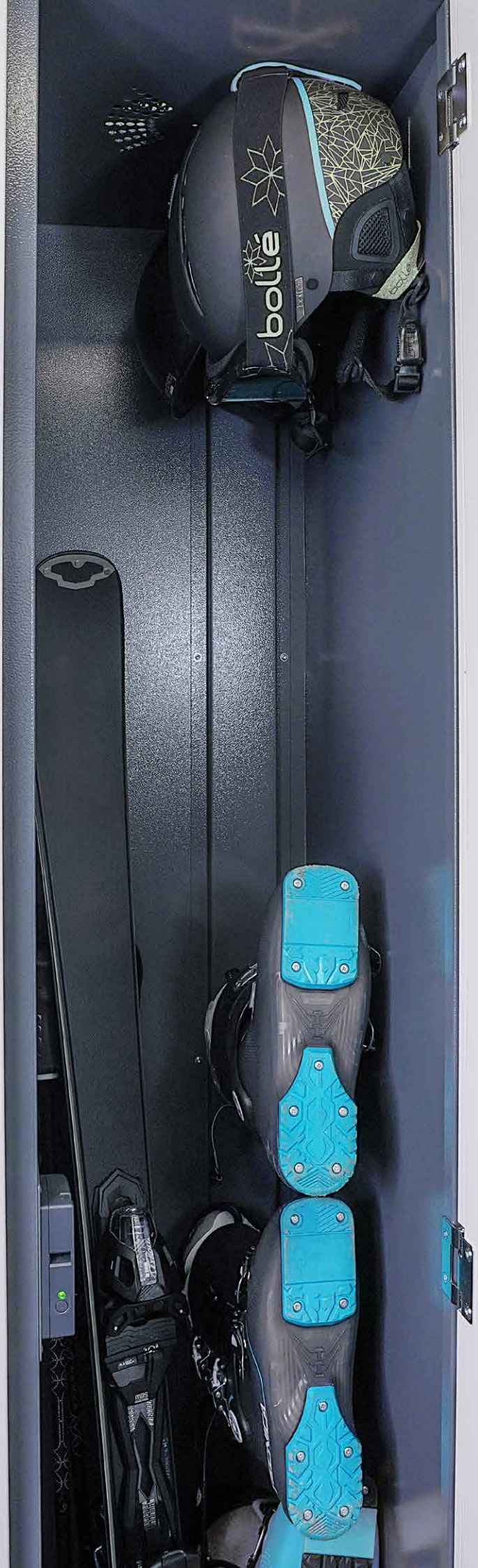
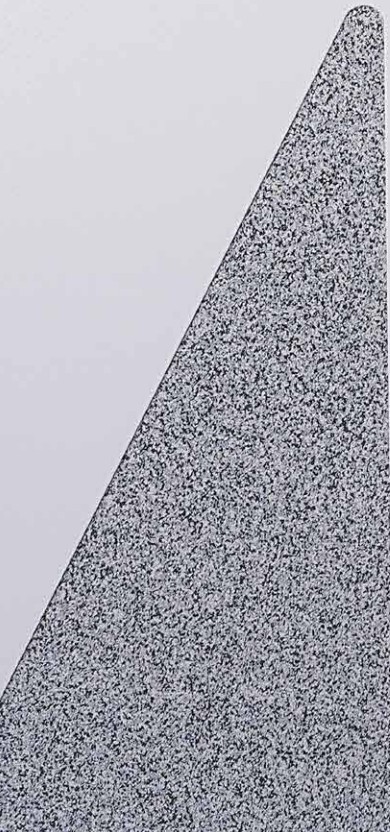


502 503 508 510 511 512 513 514 515 516 517 518 519 520 521 522 523 524 525 526 527 528 529 530 531 532 533 534 535 536 537 538 539 540 541 542 543 544 545 546 547 548 549 550 551 552 553 554 555 556 557 558 559 560 561 562 563 564 565 566 567 568 569 570 571 572 573 574 575 576 577 578 579 580 581 582 583 584 585 586 587 588 589 590 591 592 593 594 595 596 597 598 599 600 601 602 603 604 605 606 607 608 609 610 611 612 613 614 615 616 617 618 619 620 621 622 623 624 625 626 627 628 629 630 631 632 633 634 635 636 637 638 639 640 641 642 643 644 645 646 647 648 649 650 651 652 653 654 655 656 657 658 659 660 661 662 663 664 665 666 667 668 669 670 671 672 673 674 675 676 677 678 679 680 681 682 683 684 685 686 687 688 689 690 691 692 693 694 695 696 697 698 699 700 701 702 703 704 705 706 707 708 709 710 711 712 713 714 715 716 717 718 719 720 721 722 723 724 725 726 727 728 729 730 731 732 733 734 735 736 737 738 739 740 741 742 743 744 745 746 747 748 749 750 751 752 753 754 755 756 757 758 759 760 761 762 763 764 765 766 767 768 769 770 771 772 773 774 775 776 777 778 779 780 781 782 783 784 785 786 787 788 789 790 791 792 793 794 795 796 797 798 799 800 801 802 803 804 805 806 807 808 809 810 811 812 813 814 815 816 817 818 819 820 821 822 823 824 825 826 827 828 829 830 831 832 833 834 835 836 837 838 839 840 841 842 843 844 845 846 847 848 849 850 851 852 853 854 855 856 857 858 859 860 861 862 863 864 865 866 867 868 869 870 871 872 873 874 875 876 877 878 879 880 881 882 883 884 885 886 887 888 889 890 891 892 893 894 895 896 897 898 899 900 901 902 903 904 905 906 907 908 909 910 911 912 913 914 915 916 917 918 919 920 921 922 923 924 925 926 927 928 929 930 931 932 933 934 935 936 937 938 939 940 941 942 943 944 945 946 947 948 949 950 951 952 953 954 955 956 957 958 959 960 961 962 963 964 965 966 967 968 969 970 971 972 973 974 975 976 977 978 979 980 981 982 983 984 985 986 987 988 989 990 991 992 993 994 995 996 997 998 999 1000

201 200 211 210 209 208 207

205 204









printed in
switzerland



facebook.com/montanasportinternational



youtube.com/skiservicemontana



instagram.com/montanasportinternational

MONTANA®

THE WORLD OF EXCELLENCE

ski & board service machines | rental systems | skins

MONTANA SPORT INTERNATIONAL AG

Mühlebachstrasse 3 · CH-6370 Stans

Phone +41 (0)41 619 16 62

info@montana-international.com · montana-international.com

MONTANA ITALIA S.R.L.

via Goethe, 7 · IT-39012 Merano (BZ)

info@montana-italia.it · montana-italia.it

MONTANA SPORT NORTH AMERICA INC.

8 Federal Way · US-Groveland, MA 01834-1564

Phone +1 978 420 1700 · Fax +1 978 420 1701

sthirkell@montanasportna.com · montanasportna.com